

## PRODUCT INFO

# KRYSTOL® LEAK REPAIR KIT



BE SURE. BE KRYTON.

The Krystol Leak Repair Kit contains enough material to repair and permanently waterproof approximately 6 linear meters (20 ft.) of leaking cracks, holes and joints using the Krystol Leak Repair System.

The Krystol Leak Repair System uses Krystol crystalline technology which reacts with water and cement particles to grow needle-shape crystals within the concrete. These insoluble crystals block capillary pores and fill cracks to stop the ingress of water and make the concrete itself a permanent waterproof barrier.

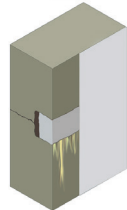
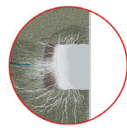
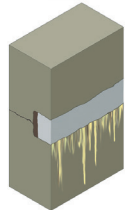
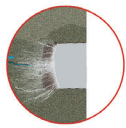
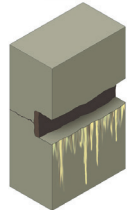
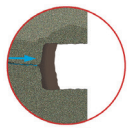
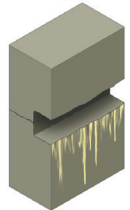
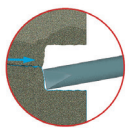
The Krystol Leak Repair System is an easy 4 step process:

1. Prepare the chase by chiseling to the required 40 mm (1.5 in) depth and 25 mm (1 in) width.
2. Stop flowing water by filling the chase 1/3 full, or approximately 12mm (0.5 in), with Krystol Plug.
3. Fill remainder 2/3 of the chase with Krystol Repair Grout.
4. Cover chase and 6 inches on either side of chase with Krystol T1 cementitious slurry.

A permanent solution for repairing and waterproofing leaking cracks, holes and joints – even against high flow and high pressure.

## FEATURES & BENEFITS

- Permanent leak repair solution
- Easy installation
- Crystalline waterproofing technology
- 40+ years of proven performance
- Withstands hydrostatic pressure
- More reliable than injection systems
- Color matches concrete



**Step 1:**  
Prepare the  
crack or joint.

**Step 2:**  
Stop flowing  
water with  
Krystol Plug.

**Step 3:**  
Install Krystol  
Repair Grout.

**Step 4:**  
Apply Krystol T1  
to the surface.

## KIT CONTAINS:



1 x 5 kg (11 lbs)  
**Krystol Plug**  
(Rapid Setting Hydraulic  
Cement)



Detailed Instructions



1 x 5 kg (11 lbs)  
**Krystol T1**  
(Surface Applied  
Waterproofing Slurry)



Crack Depth  
Measuring Guide

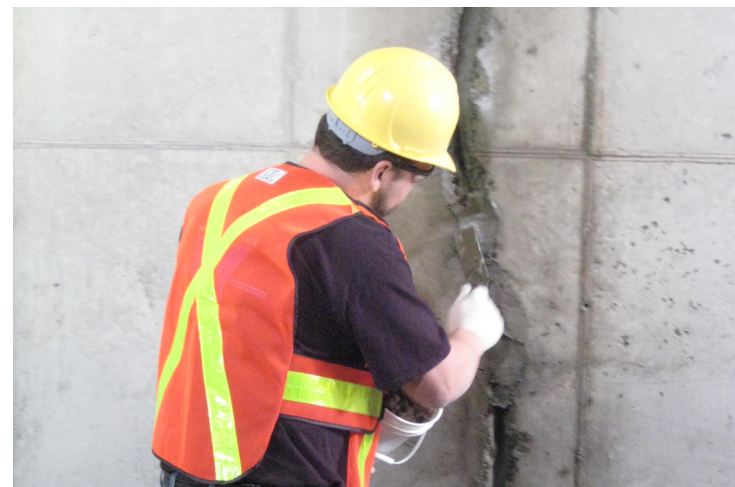


2 x 5 kg (11 lbs)  
**Krystol Repair Grout**  
(Crystalline Waterproofing  
Grout with Anti-shrink  
Reinforcing Fibers)



2 x Measuring Cup

Note: You will need an electric chipping hammer with a 1" chisel bit, drill and mixing paddle, as well as common masonry tools.



### Kryton International Inc.

1645 East Kent Avenue, Vancouver BC, Canada V5P 2S8 | TEL 1.604.324.8280 | FAX 1.604.324.8899 | TOLL FREE 1.800.267.8280 | WEB kryton.com

Kryton, Krytonite, Krystol and KIM are trademarks of Kryton International Inc. ©2015