

Supporting Municipalities, Contractors and the Plumbing Industry



S1E CATALOG

***Water Management &
Infrastructure Rehabilitation***



INDEX OF SOLUTIONS

Trenchless Pipe Rehabilitation

PipePatch Solutions

| | |
|--|-------|
| PipePatch No Dig Pipe Repair | 4-5 |
| PipePatch Repair Kits | 6-7 |
| PipePatch Repair Packers | 8-9 |
| PipePatch UV Light System | 10-11 |
| TYGERPatch Mainline Connect Repair | 12-13 |
| PipePatch Equipment | 14 |
| Pipe-Robo-Tec USA Mechanical Seal | 15 |
| Lateral Lining Consumables & Equipment | 16-19 |
| Lateral Lining Trial Program | 20 |
| SilverBack XL Flexible Couplings | 21 |

Drain Cleaning & Reinstatement Solutions

| | |
|-------------------------------------|----|
| Lining Cannon | 22 |
| Miller Systems | 22 |
| Shafts, Sockets & Adapters | 22 |
| Sleeves & Bearings | 23 |
| Steering Axle & Fine Tuning Tools | 23 |
| Smart Cutter Packages | 23 |
| Smart Cutter Hubs & Hub Discs | 23 |
| Drain Cleaning Chains | 24 |
| Drain Cleaning Grabbers | 25 |
| Smart Spider | 25 |
| Twister Mini & Twister Express | 25 |
| Twister Liner Removers & Rep. Parts | 25 |
| Side Grinding Panels (10-Panels) | 25 |
| Polishing & Pipe Cutting Panels | 26 |
| Panels For Mini Cleaner | 26 |
| Front Panels & Drill Heads | 26 |
| Sspecial Drill Head Cutters | 26 |
| Picote Coating System | 26 |
| Resins & Brushes | 26 |

Inspection Systems

| | |
|-------------------------------------|----|
| Pipe Trekker Crawler & Ad-Ons | 27 |
| Conquest Push Camera Systems | 28 |
| S1E Push Camera System & Combo | 29 |
| Camera Head Locator & Leak Detector | 29 |

Water Management

| | |
|-------------------------------|----|
| GreyCoat Epoxy Coating | 30 |
| Hyperflex Basement Repair Kit | 30 |
| Pow-R Wrap-Fiberglass Wrap | 30 |
| Pow-R Patch Epoxy Patch | 30 |
| Pow-R Wrap Industrial Wrap | 30 |

Quadex Manhole Rehabilitation

| | |
|--------------------------------------|----|
| Manhole Repair Material Poster | 31 |
| <i>Epoxies & Polymerics</i> | |
| - Structure Guard FM | 32 |
| - Structure Guard RS | 32 |
| - FlexGuard FM | 32 |
| - Chimney Guard | 32 |
| <i>Cementitious Materials</i> | |
| - Hyperform | 33 |
| - Hyperform -RS | 33 |
| - Quad-Plug | 33 |
| - QM-1s Restore | 33 |
| <i>Polyurethane Grouts</i> | |
| - I&I Guard PRF | 33 |
| - I&I Guard SCF | 33 |
| - I&I Guard SCF 200 | 33 |
| - I&I Guard MSF | 33 |
| <i>Epoxy /Grout Guns</i> | |
| - Quad ONEGUN & ONEGUN Mini | 34 |
| - Quad M ONEGUN 600/900/1200 | 34 |
| - I&I Guard Dual Component Pneumatic | 34 |

Resource

| | |
|------------------|----|
| CIPP White Paper | 35 |
|------------------|----|

S1E MISSION



In 2009, Source One Environmental (S1E) began with an idea, a product and a desire to provide innovative support to Municipalities, Contractors and Plumbers in the Water Management and Infrastructure Rehabilitation markets.

Today, S1E is the worldwide-leading manufacturer and distributor of trenchless solutions for Infrastructure Rehabilitation and Water Management repairs. With an extensive product line-up ranging from CIPP spot repair products to asset management technology, our solutions provide the industry permanent, structural repairs in a timely and cost-effective manner. Our dedication within the industry only strengthens as we continue cultivating relationships with customers and strategic partners to engineer constantly evolving solutions.



Pipe repair made from the inside of the damaged pipe – ***no excavation needed.***

Trenchless Pipe
Rehabilitation

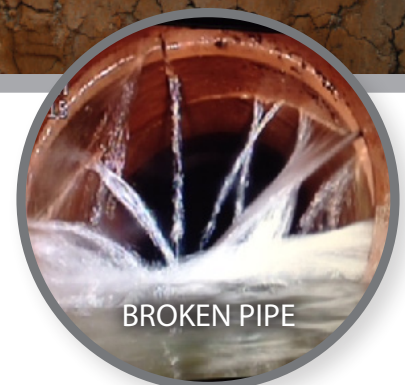


Premier Point Repair Technology

Say goodbye to costly and time consuming excavations, and get right to the point of trenchless pipe repair with the PipePatch® NO DIG Pipe Repair System.

PipePatch's proactive approach provides an effective structural point repair. When compared to 'dig & replace' methods, PipePatch only repairs areas that require rehabilitation—saving time, investment, materials and labor. PipePatch allows you to create multiple repairs in one day and requires as little as one factory trained installer.

Need a special order Packer or PipePatch kit?
Custom sizes are available for your next job.



Our Packer Systems repair pipe from 1½" up to 72" diameter with patches in 24", 48", 84", and 10'-15' lengths.



Don't Let a 90° Turn Get in Your Way

Before this new technology, the process for repairing elbows was the expensive, dig and replace method. The Elbow Packer system repairs up to a 90 degree sewer fitting while being cost effective and timely, completed in as little as one hour. As with all PipePatch products, you are left with a long-lasting structural repair that



stands up to the most aggressive sewer maintenance.



Structural Integrity

PipePatch forms a pipe within a pipe with the resin and fiberglass serving as barrier between the pipe interior and the exterior conditions. Restoring structural integrity, PipePatch exceeds the CIPP Specification ASTM F1216 that requires materials to be tested for a 50-year minimum service life. PipePatch has been tested and proven to withstand pressure, extreme conditions, and time for the pipe to perform for years to come.

Flow Capacity

After the installation is complete, PipePatch is ⅛" thick which only minimally alters the pipes original diameter. PipePatch's smooth interior and tapered ends improve the pipeline's flow capacity and performance, while providing corrosion and abrasion resistance. Because of it's thin and smooth qualities, the integrity of the pipe is not compromised and functions normally.



The PipePatch Lateral Seal system creates a 360° or top hat CIPP lateral connection installed from the main during live flow using the nearest manhole without needing access to

the homeowners property. Designed with non-shrinking components,



TYGERPatch is proven effective and longlasting in the most aggressive sewer conditions.



For use on 3" - 10" diameter pipes, the PipePatch Xtend comes with today's most-complete "pull-in-place" structural repair kit.

- Cure times as low as 1.5 hours
- Complete Kit
- 10' - 15' extra-long packers





PipePatch® Repair Kits

Technical Data

- Odorless and ideal for working in confined spaces
- Outstanding bonding properties to most materials
- Resistance to 63+ chemicals and oils
- Non-flammable - ideal for hotels, airports & hospitals
- Non-hazardous - no transport or disposal issues
- Resin cures in the presence of water
- Structural properties exceed the minimum requirements of ASTM F 1216

Environmentally Safe

- PipePatch contains no VOCs or Styrene
- Safe for storm and sanitary sewers
- Maximum temperature may reach 105° F

Application Advantages

- Custom Lengths Available
- Flow-thru Packers prevent backups during repairs
- Less disruptive and time consuming excavations
- Only standard sewer cleaning and inspection equipment required
- Small repair crews - as few as 1 to 3 people
- Short repair times - several can be done in one day
- Durable 50 year repair life

1½" & 2" REPAIR KITS

| Part Number | Description |
|---------------|------------------------------|
| FPP-1.5X18W | 1 1/2" x 18" PipePatch Kit |
| FPP-2X18W | 2" x 18" PipePatch Kit |
| FPP-EL2 | 2" x 18" Elbow PipePatch Kit |
| FPP-2X12W-END | 2" x 12" End PipePatch Kit |

24" LENGTH - REPAIR KITS

| Part Number | Description |
|-------------|-------------------------|
| FPP-3 | 3" x 24" PipePatch Kit |
| FPP-4 | 4" x 24" PipePatch Kit |
| FPP-6 | 6" x 24" PipePatch Kit |
| FPP-8 | 8" x 24" PipePatch Kit |
| FPP-10 | 10" x 24" PipePatch Kit |
| FPP-12 | 12" x 24" PipePatch Kit |
| FPP-15 | 15" x 24" PipePatch Kit |
| FPP-18 | 18" x 24" PipePatch Kit |
| FPP-24 | 24" x 24" PipePatch Kit |

48" LENGTH - REPAIR KITS

| Part Number | Description |
|-------------|-------------------------|
| FPP-3X48 | 3" x 48" PipePatch Kit |
| FPP-4X48 | 4" x 48" PipePatch Kit |
| FPP-6X48 | 6" x 48" PipePatch Kit |
| FPP-8X48 | 8" x 48" PipePatch Kit |
| FPP-10X48 | 10" x 48" PipePatch Kit |
| FPP-12X48 | 12" x 48" PipePatch Kit |
| FPP-15X48 | 15" x 48" PipePatch Kit |
| FPP-18X48 | 18" x 48" PipePatch Kit |
| FPP-24X48 | 24" x 48" PipePatch Kit |

84" LENGTH - REPAIR KITS

| Part Number | Description |
|-------------|-----------------------------|
| FPP-6X84-7 | 6" x 84" (7) PipePatch Kit |
| FPP-8X84-7 | 8" x 84" (7) PipePatch Kit |
| FPP-10X84-7 | 10" x 84" (7) PipePatch Kit |

* Custom lengths available.

ELBOW REPAIR KITS

| Part Number | Description |
|-------------|-------------------------|
| FPP-EL3 | 3" Elbow PipePatch Kit |
| FPP-EL4 | 4" Elbow PipePatch Kit |
| FPP-EL6 | 6" Elbow PipePatch Kit |
| FPP-EL8 | 8" Elbow PipePatch Kit |
| FPP-EL10 | 10" Elbow PipePatch Kit |

LONG ELBOW REPAIR KITS

| Part Number | Description |
|-------------|-----------------------|
| FPP-EL3X48 | 3" Elbow - 48" Repair |
| FPP-EL4X48 | 4" Elbow - 48" Repair |
| FPP-EL6X48 | 6" Elbow - 48" Repair |

LATERAL PIPEPLUG KITS

| Part Number | Description |
|----------------|-----------------|
| FPP-PIPEPLUG-4 | 4" PipePlug Kit |
| FPP-PIPEPLUG-6 | 6" PipePlug Kit |
| FPP-PIPEPLUG-8 | 8" PipePlug Kit |

PILLOW REPAIR KITS

| Part Number | Description |
|-------------|----------------------------------|
| FPP-3036x48 | 30"-36"x 48" No fold Pillow Kit |
| FPP-4248X48 | 42"-48" x 48" No fold Pillow Kit |
| FPP-60X48 | 60" x 48" No fold Pillow Kit |
| FPP-72X48 | 72" x 48" No fold Pillow Kit |

PipePatch® Certifications & Standards Compliance

Plastics Piping System Components and Related Materials



IAPMO Research and Testing assessment of the Quality Assurance System



PipePatch is in compliance with standards ASTM F1216-2016 - "Standard Practice for Rehabilitation of Existing Pipelines and Conduits by Inversion and Curing of a Resin-Impregnated Tube"

PIPEPATCH Xtend REPAIR KITS

| Part Number | Description |
|---------------|-----------------------------|
| FPP-EXT-3X120 | 3" x 120" Pull-in-place Kit |
| FPP-EXT-4X120 | 4" x 120" Pull-in-place Kit |
| FPP-EXT-3X180 | 3" x 180" Pull-in-place Kit |
| FPP-EXT-4X180 | 4" x 180" Pull-in-place Kit |
| FPP-EXT-6X120 | 6" x 120" Pull-in-place Kit |
| FPP-EXT-6X180 | 6" x 180" Pull-in-place Kit |
| FPP-EXT-8x120 | 8" x 120" Pull-in-place Kit |
| FPP-EXT-8x180 | 8" x 180" Pull-in-place Kit |

PIPEPATCH ONE REPAIR KITS

| Part Number | Description |
|--------------|---------------------------|
| FPP1-STKIT3 | 3" Dia. / Starter Kit |
| FPP1-STKIT4 | 4" Dia. / Starter Kit |
| FPP1-STKIT6 | 6" Dia. / Starter Kit |
| FPP1-KIT3-RK | 3" Dia. / Replacement Kit |
| FPP1-KIT4-RK | 4" Dia. / Replacement Kit |
| FPP1-KIT6-RK | 6" Dia. / Replacement Kit |



Sold **ONLY** as a Kit, the PipePatch ONE (PP1) is extremely cost effective with no major investment in equipment - "just grab a Kit and go". PP1 has cure times as low as 1-hour.

PipePatch® Packers

1½" & 2" PACKERS

| Part Number | Description |
|----------------|------------------------------|
| FPP-PACK1.5-18 | 1 1/2 x 18" PipePatch Packer |
| FPP-PACK2 | 2x18" PipePatch Packer |
| FPP-PACK2END | 2x12" PipePatch Packer - End |
| FPP-PACK2EL | 2" Elbow PipePatch Packer |

24" PATCH PACKERS

| Part Number | Description |
|----------------|--|
| FPP-PACK3-4 | 3"-4" x 24" PipePatch Packer |
| FPP-PACK4-6 | 4"-6" x 24" PipePatch Packer |
| FPP-PACK6-10FT | 6"-10" x 24" PipePatch Packer - Flow Thru |
| FPP-PACK8-12 | 8"-12" x 24" PipePatch Packer |
| FPP-PACK8-12FT | 8"-12" x 24" PipePatch Packer - Flow Thru |
| FPP-PACK1215FT | 12"-15" x 24" PipePatch Packer - Flow Thru |
| FPP-PACK1824FT | 18"-24" x 24" PipePatch Packer - Flow Thru |

48" PATCH PACKERS

| Part Number | Description |
|-------------------|--|
| FPP-PACK3-4X48 | 3"-4" x 48" PipePatch Packer |
| FPP-PACK4-6X48 | 4"-6" x 48" PipePatch Packer |
| FPP-PACK610FT48 | 6"-10" x 48" PipePatch Packer - Flow Thru |
| FPP-PACK8-12X48 | 8"-12" x 48" PipePatch Packer |
| FPP-PACK8-12X48FT | 8"-12" x 48" PipePatch Packer - Flow Thru |
| FPP-PACK1215FT48 | 12"-15" x 48" PipePatch Packer - Flow Thru |
| FPP-PACK1824FT48 | 18"-24" x 48" PipePatch Packer - Flow Thru |

84" PATCH PACKERS

| Part Number | Description |
|---------------------|---|
| FPP-PACK610X84-7 | 6"-10" x 84" (7) PipePatch Packer - Flow Thru |
| FPP-PACK8-12X84FT-7 | 8"-12" x 84" (7) PipePatch Packer - Flow Thru |

10' - 15' Xtend PACKERS

| Part Number | Description |
|------------------------|-----------------------------|
| FPP-PACK 3-4x120 | 3"-4" / Contact Length 10' |
| FPP-PACK 3-4x180 | 3"-4" / Contact Length 15' |
| FPP-PACK 4-6x120 | 4"-6" / Contact Length 10' |
| FPP-PACK 4-6x180 | 4"-6" / Contact Length 15' |
| FPP-PACK8-12X120-NW-FT | 8"-12" / Contact Length 10' |
| FPP-PACK8-12X180-NW-FT | 8"-12" / Contact Length 15' |



* Custom Packer lengths available.

S1E Lateral Packers

S1E Flow Through Packer

LATERAL PIPEPLUG PACKERS

| Part Number | Description |
|-----------------|-----------------------------|
| FPP-PLUGPACK3 | 3" PipePlug Packer - End |
| FPP-PLUGPACK4-6 | 4"-6" PipePlug Packer - End |
| FPP-PLUGPACK8 | 8" PipePlug Packer - End |



Plug Packer

ELBOW PACKERS

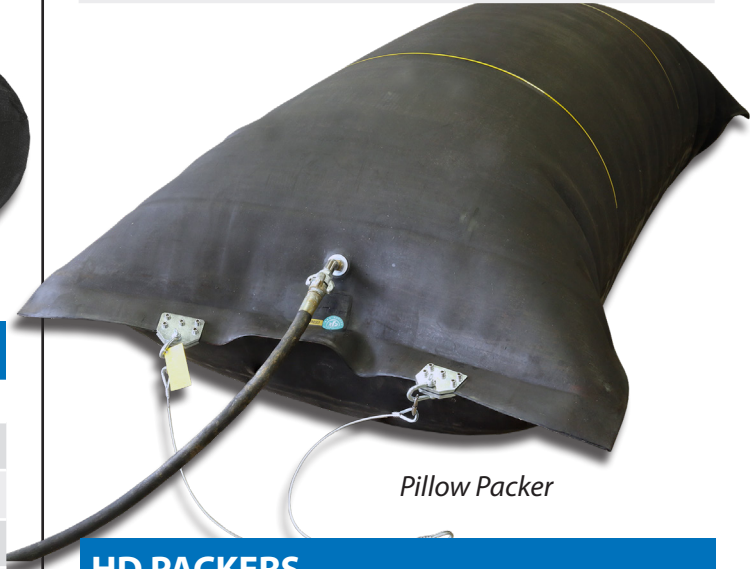
| Part Number | Description |
|----------------|---|
| FPP-PACK2EL | 2" Elbow PipePatch Packer |
| FPP-PACK3EL | 3" Elbow PipePatch Packer |
| FPP-PACK4EL | 4" Elbow PipePatch Packer |
| FPP-PACK6EL | 6" Elbow PipePatch Packer |
| FPP-PACK8EL | 8" Elbow PipePatch Packer |
| FPP-PACK10EL | 10" Elbow PipePatch Packer |
| FPP-PACK3X48EL | 3" Elbow Repairs / 24"-48" Inflate zone |
| FPP-PACK4X48EL | 4" Elbow Repairs / 24"-48" Inflate zone |
| FPP-PACK6X48EL | 6" Elbow Repairs / 24"-48" Inflate zone |



Elbow Packers

LARGE DIAMETER PACKERS

| Part Number | Description |
|----------------------|-----------------------------------|
| FPP-PILLOW-1524X48 | 15"-24" x 48" Pillow Packer |
| FPP-PILLOW-1524X48FT | 15"-24" x 48" Flow Through Pillow |
| FPP-PILLOW-3036X48 | 30"-36" x 48" Pillow Packer |
| FPP-PILLOW-3036X48FT | 30"-36" x 48" Flow Through Pillow |
| FPP-PILLOW-4248X48 | 42"-48" x 48" Pillow Packer |
| FPP-PILLOW-6072X48 | 60"-72" x 48" Pillow Packer |



Pillow Packer

HD PACKERS

| Part Number | Description |
|--------------------|--|
| FPP-PACK3-6-HD | (3-6 inch x 24 inch lateral repairs) Packer Dimensions: 1.80" OD x 59" Length |
| FPP-PACK3-6x48-HD | (3-6 inch x 48 inch lateral repairs) Packer Dimensions: 1.80" OD x 79" Length |
| FPP-PACK5-12-HD | (6-12 inch x 24 inch lateral repairs) Packer Dimensions: 4.18" OD x 59" Length |
| FPP-PACK5-12X48-HD | (6-12 inch x 48 inch lateral repairs) Packer Dimensions: 4.18" OD x 79" Length |



Navigation Ball
for HD Packer

HD Packer

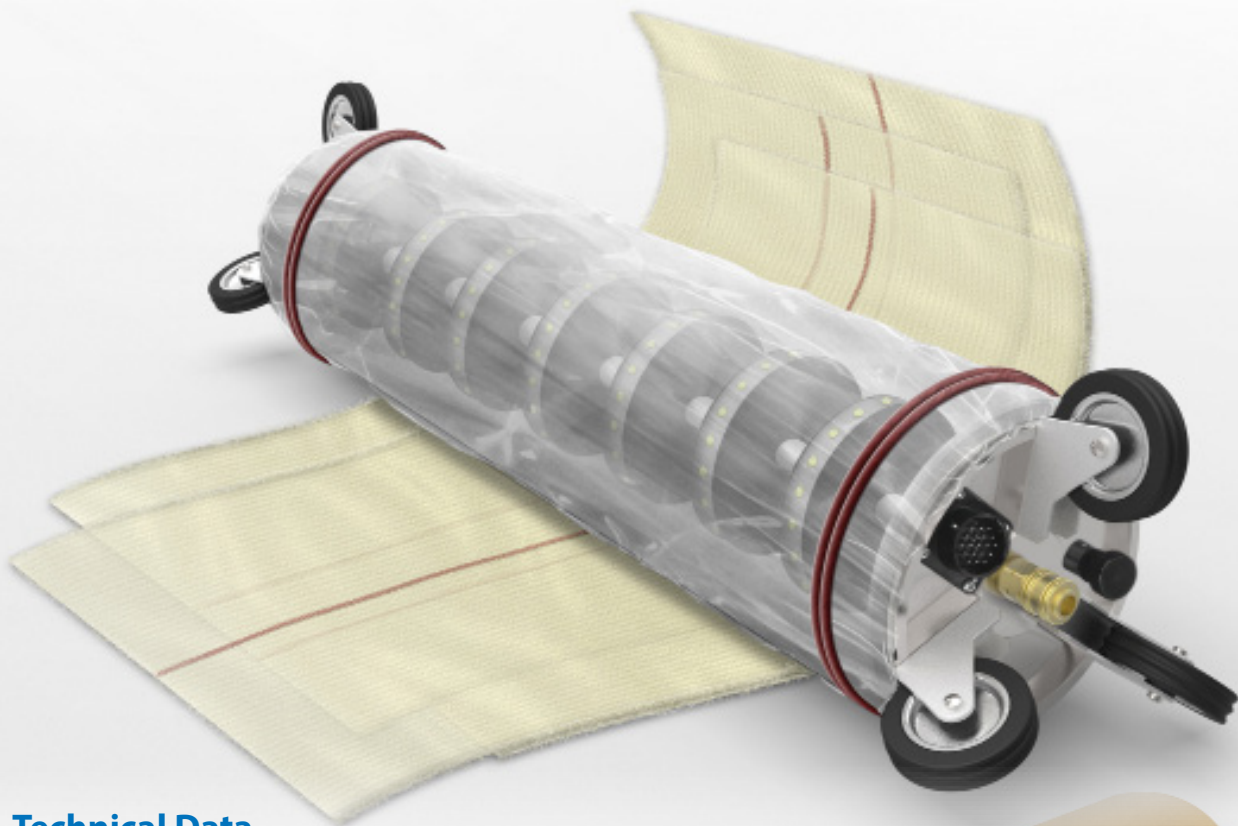
Custom Packer lengths available.

PipePatch® UV Light System

Trenchless Pipe
Rehabilitation

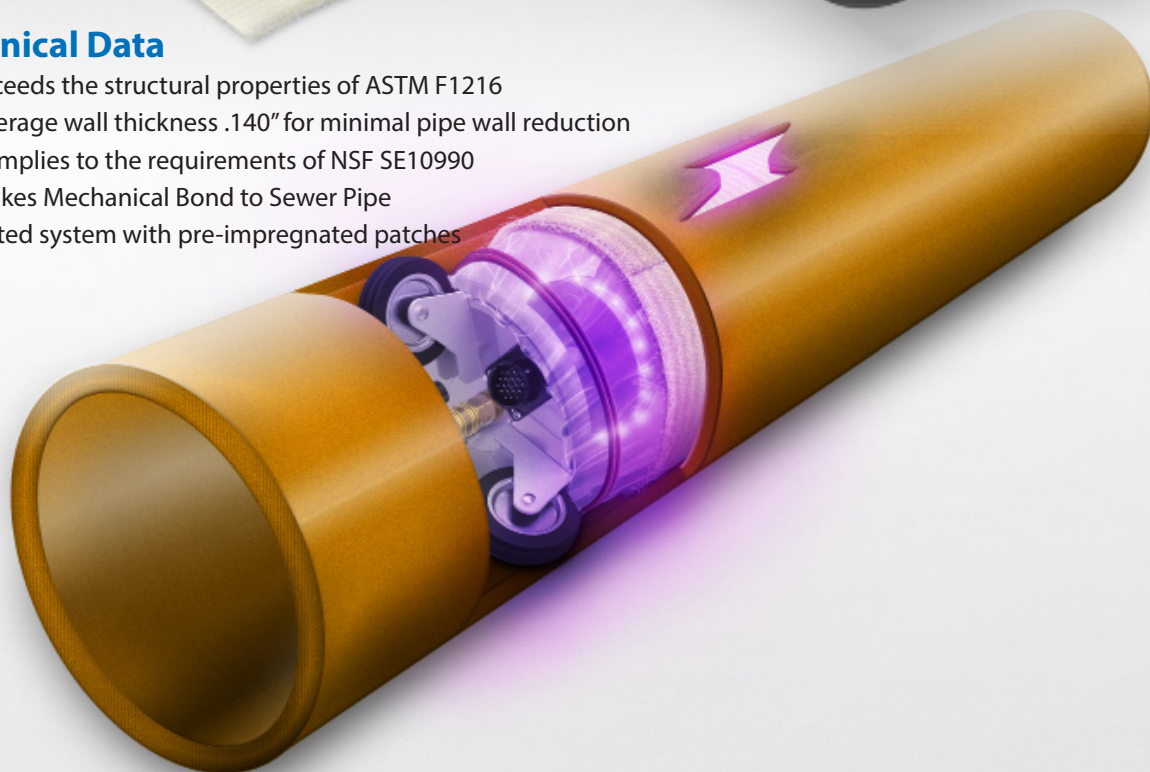


**High-Performance
Technology Offering
UV Light Cured Patches
in 10 Minutes**



Technical Data

- Exceeds the structural properties of ASTM F1216
- Average wall thickness .140" for minimal pipe wall reduction
- Complies to the requirements of NSF SE10990
- Makes Mechanical Bond to Sewer Pipe
- Kitted system with pre-impregnated patches



PipePatch® UV Light System

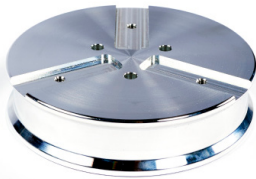
UV Light Train

| Part Number | Description |
|------------------|---------------------------|
| UV-LIGHT TRAIN24 | For 24" long patch repair |
| UV-LIGHT TRAIN48 | For 48" long patch repair |



UV End Plates

| Part Number | Description |
|-----------------|---------------------------------|
| UV-END-PLATE6-8 | For 6"-8" pipe diameter repairs |
| UV-END-PLATE10 | For 10" pipe diameter repairs |
| UV-END-PLATE12 | For 12" pipe diameter repairs |



UV QUAD-CURE Bulk Resin & Fiberglass

| Part Number | Description |
|------------------|------------------------------------|
| UV-Quad-Cure40 | QUADCURE UV 40lb. Bucket |
| UV-Quad-Cure440 | QUADCURE UV 440lb. Drum |
| BULK-FR48x100-NF | 48" x 100' Fiberglass Roll No Fold |



Fiberglass Roll



QUAD-CURE Bucket



UV Control Box



UV Cable & Drum

UV Packer Bladder

| Part Number | Description |
|----------------|---|
| UV-PACK6-8X24 | 6"-8" packer bladder for 24" UV light train |
| UV-PACK6-8X48 | 6"-8" packer bladder for 48" UV light train |
| UV-PACK6-10X24 | 10" packer bladder for 24" UV light train |
| UV-PACK10X48 | 10" packer bladder for 48" UV light train |
| UV-PACK12X24 | 12" packer bladder for 24" UV light train |
| UV-PACK12X48 | 12" packer bladder for 48" UV light train |



UV Equipment

| Part Number | Description |
|------------------|---|
| UV-CABLE-DRUM164 | 164' Cable and Drum - connect UV Packer to Operating Unit |
| UV-CONTROL-BOX | Operating unit for monitoring and light curing |
| UV-SPARE-WHEEL6 | Spare wheel set (six total wheels) and fixing bolts |



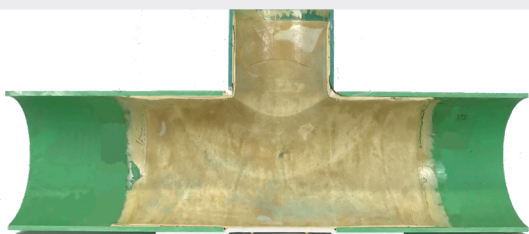
***360° repair in
both the Lateral
and Main***



The TYGERPatch creates a mainline to lateral seal repair, without access to the homeowner's property or disrupting live flow in the mainline. The TYGERPatch mechanically bonds to all pipe types. Once installed, the system forms a smooth transition and may be used in a wide variety of configurations. The TYGERPatch is designed to extend 6" into the lateral.

TYGERPatch Lateral Seal 360° Main Tee Resin Repair Kit

| Part Number | Description |
|-------------|-----------------------------|
| FPP-8X4TEE | 8" x 4" TYGERPatch Tee Kit |
| FPP-8X6TEE | 8" x 6" TYGERPatch Tee Kit |
| FPP-10X4TEE | 10" x 4" TYGERPatch Tee Kit |
| FPP-10X6TEE | 10" x 6" TYGERPatch Tee Kit |
| FPP-12X4TEE | 12" x 4" TYGERPatch Tee Kit |
| FPP-12X6TEE | 12" x 6" TYGERPatch Tee Kit |
| FPP-15x4TEE | 15" x 4" TYGERPatch Tee Kit |
| FPP-15x6TEE | 15" x 6" TYGERPatch Tee Kit |
| FPP-18x4TEE | 18" x 4" TYGERPatch Tee Kit |
| FPP-18x6TEE | 18" x 6" TYGERPatch Tee Kit |



TYGERPatch Lateral Seal 360° Main Wye Resin Repair Kit

| Part Number | Description |
|-------------|-----------------------------|
| FPP-8X4WYE | 8" x 4" TYGERPatch Wye Kit |
| FPP-8X6WYE | 8" x 6" TYGERPatch Wye Kit |
| FPP-10X4WYE | 10" x 4" TYGERPatch Wye Kit |
| FPP-10X6WYE | 10" x 6" TYGERPatch Wye Kit |
| FPP-12X4WYE | 12" x 4" TYGERPatch Wye Kit |
| FPP-12X6WYE | 12" x 6" TYGERPatch Wye Kit |
| FPP-15x4WYE | 15" x 4" TYGERPatch Wye Kit |
| FPP-15x6WYE | 15" x 6" TYGERPatch Wye Kit |
| FPP-18x4WYE | 18" x 4" TYGERPatch Wye Kit |
| FPP-18x6WYE | 18" x 6" TYGERPatch Wye Kit |





Available in SUMMER & WINTER Kits

Trenchless Pipe
Rehabilitation

TYGERPatch Lateral Repair Packers

| Part Number | Description |
|---------------------|---|
| FPP-PACK-TH-4Slim | 4" Schwalm rubber LID/6" main |
| FPP-PACK-TH-4 | 4" Schwalm rubber LID |
| FPP-PACK-TH-6 | 6" Schwalm rubber LID |
| FPP-PACK-TY-8FT | 8" Flow-through Schwalm packer |
| FPP-PACK-TY-10-12FT | 10"-12" Flow-through Schwalm packer |
| FPP-PACK-TY-12-16FT | 12"-16" Flow-through Schwalm packer |
| FPP-PACK-TY-16-20FT | 16"-20" Flow-through Schwalm packer |
| FPP-PACK-TY-16-20 | 16"-20" Non Flow-through Schwalm packer |
| FPP-PACK-TY-16-24FT | 16"-24" Flow-through Schwalm packer |
| FPP-PACK-TY-16-24 | 16"-24" Non Flow-through Schwalm packer |
| FPP-PACK-TY-20-28FT | 20"-28" Flow-through Schwalm packer |
| FPP-PACK-TY-24-32FT | 24"-32" Flow-through Schwalm packer |

TYGERPatch Lateral Seal Top Hat Main Wye Resin Repair Kit

| Part Number | Description |
|-------------|-------------------------------|
| FPP-4Y-TH | 4" TYGERPatch Top Hat Wye Kit |
| FPP-6Y-TH | 6" TYGERPatch Top Hat Wye Kit |

TYGERPatch Lateral Seal Top Hat Main Tee Resin Repair Kit

| Part Number | Description |
|-------------|-------------------------------|
| FPP-4T-TH | 4" TYGERPatch Top Hat Tee Kit |
| FPP-6T-TH | 6" TYGERPatch Top Hat Tee Kit |

TYGERPatch - Equipment

| Part Number | Description |
|----------------|---|
| FPP-REG-LAT | Regulator For Schwalm System (2 needed for TY system) |
| FPP-AIRHOSE150 | 150' Air Hose for Schwalm Packer (2 needed for TY system) |
| FPP-BKT8 | Camera Bracket for Schwalm 8" Tee/Wye Packers |
| FPP-BKT10-12 | Camera Bracket for Schwalm 10"-12" Tee/Wye Packers |
| FPP-PUSHROD-TY | Schwalm 5' Steel Push Rod |
| FPP-TY-Wrench | 3/8" Wrench/Packer Position |
| Cutter System | Schwalm Robotic Cutter |



Lateral and Main
repair up to 15".
Top Hat repair up
to 32".



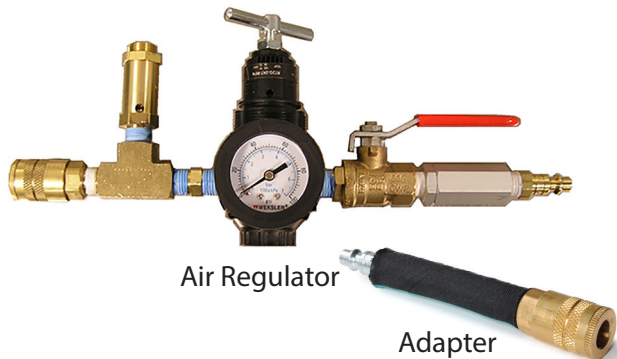
Powered By:



Packer with Top Hat

SMALL DIAMETER EQUIPMENT

| Part Number | Description |
|-----------------|----------------------------------|
| FPP-REG-ASM-2 | Air Regulator (0 to 60 psi) |
| FPP-WIRE-MP | Green Wire Tie (100 pcs) |
| FPP-PULLCABLE | 250' Coated Pull Cable |
| FPP-PUSHRODMINI | 5' Push Rod - for 2" and smaller |



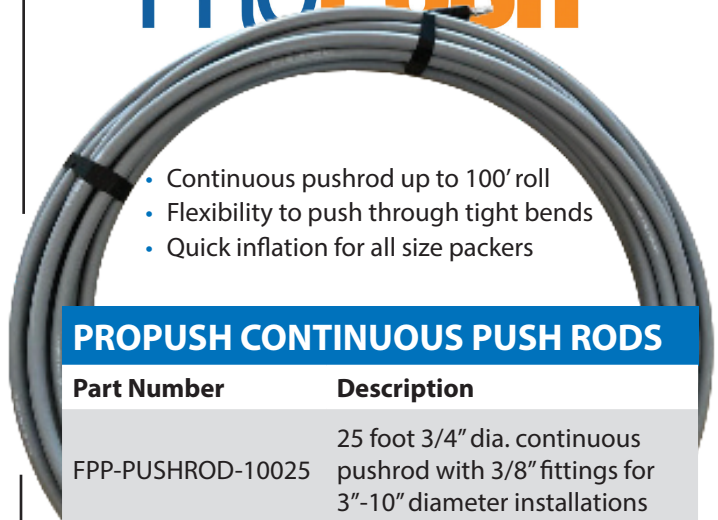
STANDARD DIAMETER EQUIPMENT

| Part Number | Description |
|------------------|---|
| FPP-REG-ASM | 3/8" Air Regulator (0 to 35 psi) |
| FPP-PUSHROD | 3/8" - 5' PipePatch Push Rod |
| FPP-ADAPTER | 3/8" PipePatch Flex Adapter |
| FPP-PULLCABLE | 250' Coated Pull Cable |
| FPP-PULLCABLE500 | 500' Coated Pull Cable |
| FPP-TY18-MP | 14" Zip Tie for 6"-10" Packer (100 pcs) |
| FPP-TY50-MP | 36" Zip tie for 12"-15" Packer (50 pcs) |
| FPP-WIRE-MP | Green Wire Tie for 3" Packer (100 pcs) |



Push Rods

PRO PUSH



- Continuous pushrod up to 100' roll
- Flexibility to push through tight bends
- Quick inflation for all size packers

PRO PUSH CONTINUOUS PUSH RODS

| Part Number | Description |
|-------------------|--|
| FPP-PUSHROD-10025 | 25 foot 3/4" dia. continuous pushrod with 3/8" fittings for 3"-10" diameter installations |
| FPP-PUSHROD-10050 | 50 foot 3/4" dia. continuous pushrod with 3/8" fittings for 3"-10" diameter installations |
| FPP-PUSHROD-10100 | 100 foot 3/4" dia. continuous pushrod with 3/8" fittings for 3"-10" diameter installations |
| FPP-PUSHROD-21075 | 75 foot 1" dia. continuous pushrod with 3/8" fittings for 10"-15" diameter installations |
| FPP-PUSHROD-21150 | 150 foot 1" dia. continuous pushrod with 3/8" fittings for 10"-15" diameter installations |

LARGE DIAMETER Equipment & Accessories

| Part Number | Description |
|---------------|---|
| FPP-SLV3648MP | 36" Protective Sleeve for 48" Packer-10p |
| FPP-SLV4848MP | 48" Protective Sleeve for 48" Packer-10p |
| FPP-REG-FAST | Fast Fill / Fast Deflate Regulator Chicago Fittings |



Large Diameter Air Regulator

Pipe-Robo-Tec USA® Mechanical Seal

Available in NO, Single or Double flange

MECHANICAL SEAL PACKERS

| Part Number | Description |
|-----------------|--------------------------------|
| FPP-PACK6-8MS | 6"-8" Mechanical Seal Packer |
| FPP-PACK8-12MS | 8"-12" Mechanical Seal Packer |
| FPP-PACK14-20MS | 14"-20" Mechanical Seal Packer |
| FPP-PACK21-24MS | 21"-24" Mechanical Seal Packer |



Special Order Only.



SLEEVE:
Corrects pipe
misalignment
and axial
bending

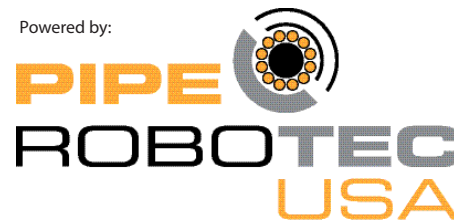


SLEEVE:
Addresses
longitudinal
cracking



SLEEVE:
Forms a seal
between the
liner surface
and the old
pipe

Powered by:



FIXED MECHANICAL SEAL SLEEVES

| Part Number | Description |
|-------------|-------------|
| FPP-SEAL6 | 6" Sleeve |
| FPP-SEAL8 | 8" Sleeve |
| FPP-SEAL10 | 10" Sleeve |
| FPP-SEAL12 | 12" Sleeve |
| FPP-SEAL15 | 15" Sleeve |
| FPP-SEAL18 | 18" Sleeve |
| FPP-SEAL21 | 21" Sleeve |
| FPP-SEAL24 | 24" Sleeve |

Special Order Only.

END MECHANICAL SEAL SLEEVES

| Part Number | Description |
|-------------|---------------------|
| FPP-END6 | 6" End Seal Sleeve |
| FPP-END8 | 8" End Seal Sleeve |
| FPP-END10 | 10" End Seal Sleeve |
| FPP-END12 | 12" End Seal Sleeve |
| FPP-END15 | 15" End Seal Sleeve |
| FPP-END18 | 18" End Seal Sleeve |
| FPP-END20 | 20" End Seal Sleeve |
| FPP-END24 | 24" End Seal Sleeve |

Special Order Only.

MECHANICAL SEAL EQUIPMENT

| Part Number | Description |
|------------------|------------------------------------|
| FPP-WKDN8-12 | Wheel Kit For 8"-12" |
| FPP-WKDN14-20 | Wheel Kit for 14"-20" |
| FPP-WKDN20-24 | Wheel Kit for 20"-24" |
| FPP-COUPPLINGROD | Coupling Rod For Mechanical Packer |

Special Order Only.

Trenchless Pipe
Rehabilitation

Lateral Lining Consumables & Equipment

SOURCEONE LININGS

Resin types cure in the presence of steam, hot water and ambient cure. Overall cure time will range depending on temperature. Safe and easy handling.



Specialty resins for a complete range of Cured-In-Place Pipe (CIPP) applications.

QUAD-CURE® RESIN - STANDARD

| Part Number | Description |
|-------------|-----------------------------|
| S1E-QC-4115 | 15 Minute Epoxy - 4:1 ratio |
| S1E-QC-4130 | 30 Minute Epoxy - 4:1 ratio |
| S1E-QC-4160 | 60 Minute Epoxy - 4:1 ratio |
| S1E-QC-3120 | 20 Minute Epoxy - 3:1 ratio |
| S1E-QC-3145 | 45 Minute Epoxy - 3:1 ratio |

QUAD-CURE® RESIN - ENVIRONMENTAL

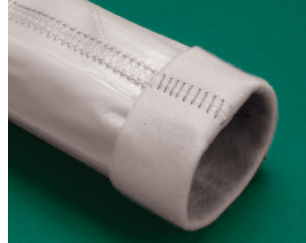
| Part Number | Description |
|----------------|-----------------------|
| UV-QUAD-CURE40 | Methacrylate UV Resin |

QUAD-CURE® LINER CALTUBE | PULLTAPE - RECIRC

| Part Number | Description |
|--------------|-----------------------------|
| S1E-PULLTAPE | 2500 lb Pull Tape- 1000 ft. |
| S1E-RECIRC | 164' lay flat hose |

QUAD-CURE® LINER | 3D

| Part Number | Description |
|----------------------------|---------------------------|
| S1E-QC-3D-Liner3-4-330x4.5 | 3D Liner 3"-4"x330'x4.5mm |
| S1E-QC-3D-Liner4-6-330x4.5 | 3D Liner 4"-6"x330'x4.5mm |
| S1E-QC-3D-Liner6-8-330x4.5 | 3D Liner 6"-8"x330'x4.5mm |



Non-woven, needle punched polyester fiber capable of navigating sweeping bends. Best for open-ended (blind shots), navigates sweeping bends up to 90°.

QUAD-CURE® LINER FLEXILINER | 45

| Part Number | Description |
|------------------------|---------------------------------|
| S1E-QC-Flexi45-4-330 | 4" x 3mm x 330' - For 45° bends |
| S1E-QC-Flexi45-6x3-330 | 6" x 3mm x 330' - For 45° bends |



Non-woven needle punched PE felt liner with impermeable PVC coating. 35% extension for 45° bends.

QUAD-CURE® LINER FLEXI 4D

| Part Number | Description |
|-----------------------|--------------------------------------|
| S1E-QC-Flexi-4D-4-330 | 4" x 4.5mm Navigates bends up to 90° |
| S1E-QC-Flexi-4D-6-330 | 6" x 4.5mm Navigates bends up to 90° |



Non-woven, needle punched PE felt liner with an impermeable polyurethane coating. Changing circumferences up to 4 diameters (4D), navigates bends up to 90°.

QUAD-CURE® LATERAL LINER | SCRIM

| Part Number | Description |
|-------------------|---|
| S1E-QC-LL3-4-3070 | 30' of 3" to 70' of 4" - Scrim Reinforced |
| S1E-QC-LL3-4-5050 | 50' of 3" to 50' of 4" - Scrim Reinforced |
| S1E-QC-LL3-4-7030 | 70' of 3" to 30' of 4" - Scrim Reinforced |
| S1E-QC-LL4-6-1090 | 10' of 4" to 90' of 6" - Scrim Reinforced |
| S1E-QC-LL4-6-2080 | 20' of 4" to 80' of 6" - Scrim Reinforced |
| S1E-QC-LL4-6-3070 | 30' of 4" to 70' of 6" - Scrim Reinforced |
| S1E-QC-LL4-6-5050 | 50' of 4" to 50' of 6" - Scrim Reinforced |
| S1E-QC-LL4-6-7030 | 70' of 4" to 30' of 6" - Scrim Reinforced |

Lateral Lining Consumables & Equipment

QUAD-CURE® LINER SCRIM REINFORCED



| Part Number | Description |
|-----------------------|---------------------------------------|
| S1E-QC-Liner3-330 | 3"x3mm - PU Coating/ Polyester Felt |
| S1E-QC-Liner3x4.5-300 | 3"x4.5mm - PU Coating/ Polyester Felt |
| S1E-QC-Liner4-330 | 4"x3mm - PU Coating/ Polyester Felt |
| S1E-QC-Liner4x4.5-300 | 4"x4.5mm - PU Coating/ Polyester Felt |
| S1E-QC-Liner6-330 | 6"x3mm - PU Coating/ Polyester Felt |
| S1E-QC-Liner6x4.5-300 | 6"x4.5mm - PU Coating/ Polyester Felt |
| S1E-QC-Liner8-330 | 8"x3mm - PU Coating/ Polyester Felt |
| S1E-QC-Liner8x4.5-300 | 8"x4.5mm - PU Coating/ Polyester Felt |

QUAD-CURE® LINER FLEXILINER 90



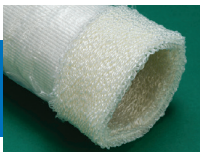
| Part Number | Description |
|--------------------------|---------------------------------|
| S1E-QC-Flexi90-2x2-165 | 2"x2mmx165' - Bends up to 90° |
| S1E-QC-Flexi90-2x2-330 | 2"x2mmx330' - Bends up to 90° |
| S1E-QC-Flexi90-3x2-165 | 3"x2mmx165' - Bends up to 90° |
| S1E-QC-Flexi90-3x2-330 | 3"x2mmx330' - Bends up to 90° |
| S1E-QC-Flexi90-4x2-330 | 4"x2mmx330' - Bends up to 90° |
| S1E-QC-Flexi90-5x2-330 | 5"x2mmx330' - Bends up to 90° |
| S1E-QC-Flexi90-6x2-330 | 6"x2mmx330' - Bends up to 90° |
| S1E-QC-Flexi90-3x4.5-330 | 3"x4.5mmx330' - Bends up to 90° |
| S1E-QC-Flexi90-4x4.5-330 | 4"x4.5mmx330' - Bends up to 90° |
| S1E-QC-Flexi90-5x4.5-330 | 5"x4.5mmx330' - Bends up to 90° |
| S1E-QC-Flexi90-6x4.5-330 | 6"x4.5mmx330' - Bends up to 90° |
| S1E-QC-Flexi90-8x4.5-330 | 8"x4.5mmx330' - Bends up to 90° |



Sewn Transition Liner

Non-woven, circular looped PE, uniquely bonded to a seamless, impermeable polyurethane coating.

QUAD-CURE® LINER NON-WOVEN



| Part Number | Description |
|----------------------|---------------------------|
| S1E-QC-NW-Liner2-165 | 2"x165'x3.5mm - Looped PE |
| S1E-QC-NW-Liner3-330 | 3"x330'x4.5mm - Looped PE |
| S1E-QC-NW-Liner4-330 | 4"x330'x4.5mm - Looped PE |
| S1E-QC-NW-Liner5-330 | 5"x330'x4.5mm - Looped PE |
| S1E-QC-NW-Liner6-330 | 6"x330'x4.5mm - Looped PE |
| S1E-QC-NW-Liner8-330 | 8"x330'x4.5mm - Looped PE |

QUAD-CURE® LINER CALTUBE HF PVC



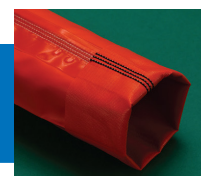
| Part Number | Description |
|--------------------|-----------------------------|
| S1E-QC-Yellow2-328 | 2"x328' HF - Ultra-flexible |
| S1E-QC-Yellow3-328 | 3"x328' HF - Ultra-flexible |
| S1E-QC-Yellow4-328 | 4"x328' HF - Ultra-flexible |
| S1E-QC-Yellow5-328 | 5"x328' HF - Ultra-flexible |
| S1E-QC-Yellow6-328 | 6"x328' HF - Ultra-flexible |
| S1E-QC-Yellow8-328 | 8"x328' HF - Ultra-flexible |

QUAD-CURE® LINER CALTUBE STITCHED



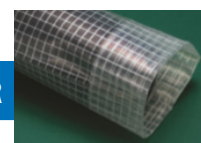
| Part Number | Description |
|--------------------|---------------------------|
| S1E-QC-Clear4-328 | 4"x328' - Clear Flexible |
| S1E-QC-Clear5-328 | 5"x328' - Clear Flexible |
| S1E-QC-Clear6-328 | 6"x328' - Clear Flexible |
| S1E-QC-Clear8-328 | 8"x328' - Clear Flexible |
| S1E-QC-Clear10-328 | 10"x328' - Clear Flexible |
| S1E-QC-Clear12-328 | 12"x328' - Clear Flexible |

QUAD-CURE® LINER CALTUBE STITCHED



| Part Number | Description |
|---------------------|---------------------------------|
| S1E-QC-Orange4-328 | 4"x328' - For higher heat cure |
| S1E-QC-Orange5-328 | 5"x328' - For higher heat cure |
| S1E-QC-Orange6-328 | 6"x328' - For higher heat cure |
| S1E-QC-Orange8-328 | 8"x328' - For higher heat cure |
| S1E-QC-Orange10-328 | 10"x328' - For higher heat cure |
| S1E-QC-Orange12-328 | 12"x328' - For higher heat cure |

QUAD-CURE® LINER PRELINER



| Part Number | Description |
|----------------------|---------------------------------|
| S1E-QC-PreLiner4-330 | 4"x330' High Strength Cord Grid |
| S1E-QC-PreLiner5-330 | 5"x330' High Strength Cord Grid |
| S1E-QC-PreLiner6-330 | 6"x330' High Strength Cord Grid |
| S1E-QC-PreLiner8-330 | 8"x330' High Strength Cord Grid |

Lateral Lining Consumables & Equipment



MICROCURE® LED CIPP CURING SYSTEM

| PART NUMBER | DESCRIPTION |
|----------------|--|
| MC-3-6SYSTEM | MICROcure LED CIPP Curing System <i>Base System - 3"-6" Pipe</i> |
| MC-3-12SYSTEM | MICROcure LED CIPP Curing Solution <i>Full System - 3"-12" Pipe</i> |
| MC-8-12UPGRADE | MICROcure LED CIPP Curing Solution <i>Base System - 8"-12" Pipe</i> |
| MC-04601920 | Compressed Air Refrigeration Dryer <i>(Included in Base & Full Systems)</i> |
| MC-04602200 | Camera Module for Light Source <i>(Included in Base System)</i> |
| MC-04601940 | Y-Pipe 6" |
| MC-04602100 | Light Source - 4 x 100 W <i>(Included in Base & Full Systems)</i> |
| MC-04602150 | Light Source - 8 x 100 W <i>(Included in Base & Full Systems)</i> |
| MC-04602170 | Wheel-set 8" (DN200) <i>(Included in Full Systems)</i> |
| MC-04601985 | Y-Pipe Extension - 8"-12" Pipe <i>(Included in Full System)</i> |
| MC-0000000 | Y-Pipe 8" |
| MC-04602592 | 32' Cable Extension |
| MC-04602480 | Additional Monitor |
| MC-01551003 | MICROpremium Box |



ARMOR® THUNDER SLUICE 200

| PART NUMBER | DESCRIPTION |
|-------------|-------------------------------|
| S1E-TS200 | Thunder Sluice 200 - 6" Storz |
| S1E-TS-CON | Control Unit |
| S1E-TS-SPS | Spray Station |

400 SERIES



600 SERIES



800 SERIES



ARMOR® THUNDER DRUM 400

| PART NUMBER | DESCRIPTION |
|-------------|-----------------------------|
| S1E-TD400 | Thunder Drum 400 - 6" Storz |

ARMOR® DRUM 600

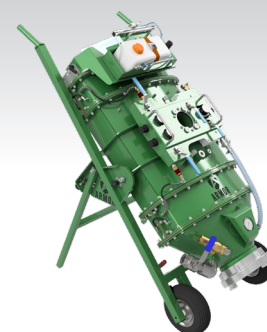
| PART NUMBER | DESCRIPTION |
|-------------|-----------------------------|
| S1E-TD600 | Thunder Drum 600 - 8" Storz |

ARMOR® THUNDER DRUM 800

| PART NUMBER | DESCRIPTION |
|-------------|-----------------------------|
| S1E-TD800 | Thunder Drum 800 - 8" Storz |

ACCESSORIES

| PART NUMBER | DESCRIPTION |
|-----------------|---|
| S1E-STZ6 | 6" Storz Wrench |
| S1E-STZ6-TH | 6" Storz to Threaded Coupling |
| S1E-6-8-ADPT | 6" Storz to 8" Storz Adaptor |
| S1E-8-2-3-Adapt | 8" Storz - 2 Cleats / 8" Storz - 3 Cleats |
| S1E-STZ8 | 8" Storz Wrench |
| S1E-STZ8-TH | 8" Storz to Threaded Coupling |

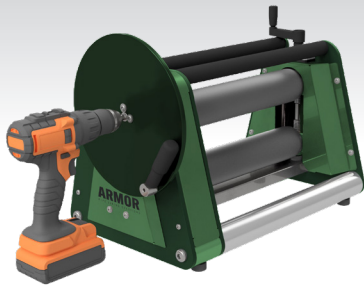


*Spray Station not included

ARMOR® THUNDER SLUICE 300

| PART NUMBER | DESCRIPTION |
|-------------|--|
| S1E-TS300 | Thunder Sluice 300 - 8" Storz |
| S1E-TS-CON | Control Unit |
| S1E-TS-SPS | Spray Station <i>(SOLD SEPARATELY)</i> |

Lateral Lining Consumables & Equipment



**Drill not included*

ARMOR® CALIBRATION UNIT - MICRO

| PART NUMBER | DESCRIPTION |
|--------------|---------------------------------|
| S1E-WO-MICRO | Calibration Unit Micro - Manual |



ARMOR® CALIBRATION UNIT - MINI

| PART NUMBER | DESCRIPTION |
|-------------|----------------------------------|
| S1E-WO-MINI | Calibration Unit Mini - Electric |

NOZZLES - STRAIGHT

NOZZLES COMPATIBLE WITH THUNDER DRUM 400 & THUNDER SLUICE 200

| PART NUMBER | DESCRIPTION |
|-------------|-------------------------------|
| S1E-STZ6-2 | 2" Straight Nozzle - 6" Storz |
| S1E-STZ6-3 | 3" Straight Nozzle - 6" Storz |
| S1E-STZ6-4 | 4" Straight Nozzle - 6" Storz |
| S1E-STZ6-5 | 5" Straight Nozzle - 6" Storz |
| S1E-STZ6-6 | 6" Straight Nozzle - 6" Storz |
| S1E-STZ6-8 | 8" Straight Nozzle - 6" Storz |

NOZZLES COMPATIBLE WITH THUNDER DRUMS 600-800 AND THUNDER SLUICE 300

| PART NUMBER | DESCRIPTION |
|-------------|--------------------------------|
| S1E-STZ8-10 | 10" Straight Nozzle - 8" Storz |
| S1E-STZ8-12 | 12" Straight Nozzle - 8" Storz |

NOZZLES - 90° BENDS

NOZZLES COMPATIBLE WITH THUNDER DRUM 400 & THUNDER SLUICE 200

| PART NUMBER | DESCRIPTION |
|---------------|--------------------------|
| S1E-STZ6-2-90 | 2" 90° Nozzle - 6" Storz |
| S1E-STZ6-3-90 | 3" 90° Nozzle - 6" Storz |
| S1E-STZ6-4-90 | 4" 90° Nozzle - 6" Storz |
| S1E-STZ6-5-90 | 5" 90° Nozzle - 6" Storz |
| S1E-STZ6-6-90 | 6" 90° Nozzle - 6" Storz |
| S1E-STZ6-8-90 | 8" 90° Nozzle - 6" Storz |

NOZZLES COMPATIBLE WITH THUNDER DRUMS 600-800 AND THUNDER SLUICE 300

| PART NUMBER | DESCRIPTION |
|----------------|---------------------------|
| S1E-STZ8-10-90 | 10" 90° Nozzle - 8" Storz |
| S1E-STZ8-12-90 | 12" 90° Nozzle - 8" Storz |



PICOTE® CALIBRATION UNIT - MIDI

| PART NUMBER | DESCRIPTION |
|---------------------------|-------------------------------------|
| S1E-WETOUT-PKG | Midi Roller Wet Out Station Package |
| S1E-WETOUT-MIDI-RS-US | Midi Roller Wet Out Station |
| S1E-WETOUT-MIDI-ROLLER-US | Midi Roller Hybrid - 2" - 9" Liners |



HOT BOX

| PART NUMBER | DESCRIPTION |
|---------------------|-------------------------------|
| S1E-HOTBOX | Hot Box - without Pump |
| S1E-HOTBOX HOSE SET | (2) 14ft. Hoses / (1) 7' Hose |

Lateral Lining Trial Program, Training & Education

SOURCEONE LININGS



Lateral Lining Trial Program

At Source One Environmental (S1E), our goal is to provide innovative solutions in the water management and infrastructure rehabilitation markets. Our products are only a portion of the equation – the ability to offer proactive solutions for our customers and provide exceptional training is what S1E ultimately strives for.

FREE In-House Demo!

Designed for individuals that have limited or no lateral lining experience.

1 day In-House classroom training and demonstration of equipment and materials. S1E will provide all consumables and equipment for the demonstration, along with meals. Accommodations (travel fees, lodging, etc.) will be the responsibility of the customer.

In-Field Demo

Designed for individuals with basic to moderate lateral lining experience.

In-Field Demo with an S1E technician covering everything from equipment to installation techniques. This demonstration provides the ability for customers to see the consumables and equipment used in live applications.

Pricing:

- \$2,200 – includes 50 ft. of consumables*
- Additional \$700.00 for 51-100 ft.
- Travel fee of \$150.00 / day (includes meals, mileage, hotel)
- Day of return - \$75.00

* Customer is responsible for the shipping of consumables and equipment. A pre-trip report, signed agreement, signed waiver, and payment MUST be completed prior to training date. If equipment is purchased during the training, then the training fee will be rolled into the cost of the equipment.

S1E TRAINING & EDUCATION

S1E offers free on-site PipePatch certification to Municipalities, Contractors and Plumbers who have purchased a system. S1E Technicians ensure that your installers are comfortable and confident with every aspect of the installation process. Our commitment to your success does not end with a purchase. The S1E team will go the extra mile with your application assistance, so you can be *the* in-field solution provider.



CONSULTATIONS IN:

WATER MANAGEMENT
INSPECTION TECHNOLOGY
PIPEPATCH CERTIFICATION
TRENCHLESS PIPE REHABILITATION

XL COUPLINGS

EXTRA Length.
EXTRA Strength.

The SilverBack XL is built to be stronger, longer and more durable than any coupling in the market. Ideal for ramming or bursting, this product will create greater confidence in your underground pipe connections.



***Ideal for Pipe
Bursting & Ramming***



This product can be custom ordered to fit most common sewer pipe sizes. Call today to learn more!

| Part Number | Description | A | B | C |
|-------------|----------------------------|-------|-------|-------|
| | | in | in | in |
| SBXL144 | 4" Clay to 4" Plastic | 5.40 | 4.50 | 10.00 |
| SBXL244 | 4" Plastic to 4" Plastic | 4.50 | 4.50 | 10.00 |
| SBXL166 | 6" Clay to 6" Plastic | 7.50 | 6.63 | 10.00 |
| SBXL266 | 6" Plastic to 6" Plastic | 6.63 | 6.63 | 10.00 |
| SBXL188 | 8" Clay to 8" Plastic | 10.00 | 6.63 | 10.00 |
| SBXL288 | 8" Plastic to 8" Plastic | 8.63 | 8.63 | 10.00 |
| SBXL21010 | 10" Plastic to 10" Plastic | 10.75 | 10.75 | 10.00 |
| SBXL21212 | 12" Plastic to 12" Plastic | 12.75 | 12.75 | 10.00 |



We carry a complete line of Picote products to make your job easier. We have everything you need for fast and efficient drain cleaning and reinstatements.



PICOTE LINING CANNON

| Part Number | Description |
|----------------|------------------------|
| P-2360000001US | Original Lining Cannon |
| P-2360000003US | Mini Lining Cannon |
| P-2360000004US | Cannon Fast Cap |
| P-900000504 | Inversion Head 2" |
| P-900000505 | Inversion Head 3" |
| P-900000506 | Inversion Head 4" |

PICOTE MILLER SYSTEMS

| Part Number | Description |
|------------------|--|
| P - 3560042012US | Maxi Miller Power Plus |
| P - 3560032012US | Maxi Miller - 1/2" shaft, 100ft range |
| P - 3551031220US | Super Midi Miller - 1/2" shaft, 65ft range |
| P - 3540000817US | Mini Miller - 1/3" shaft, 55ft range |
| P - 3530000812US | Micro Miller - 1/3" shaft, 39ft range |
| P - 3540000816US | Mini Cleaner - Cleaning Package |
| P - 3540000818US | Mini Cleaner - Cutting Package |

LINING / MILLING MACHINES CUTTERS / CHAINS / GRABBERS TWISTERS / CLEANERS / COATINGS RESINS / BRUSHES / PARTS

SHAFTS, SHAFT SOCKETS & ADAPTERS

| Part Number | Description |
|----------------|-------------------------------|
| P - 1310000065 | Shaft Socket For Drill - 1/4" |
| P - 1310000125 | Shaft Socket For Drill - 1/3" |
| P - 1310000085 | Shaft Socket For Drill - 1/2" |
| P - 1311125080 | Adapter - 1/2" / 1/3" |
| P - 9123050001 | Shaft Connector - 1/3" / 1/3" |
| P - 1313001285 | Shaft Connector 1/2" / 1/3" |
| P - 1313002125 | Shaft Connector - 1/2" / 1/2" |
| P - 1313002185 | Shaft Connector 3/4" / 3/4" |

1/4" Shaft

| | |
|-------------------|---------------|
| P - 1312020065025 | 1/4" / 25 ft. |
| P - 1312020065050 | 1/4" / 50 ft. |

1/3" Shaft with thick casing

| | |
|-------------------|----------------|
| P - 1312030085010 | 1/3" / 33 ft. |
| P - 1312030085025 | 1/3" / 25 ft. |
| P - 1312030085050 | 1/3" / 50 ft. |
| P - 1312030085075 | 1/3" / 75 ft. |
| P - 1312030085100 | 1/3" / 100 ft. |

1/2" Shaft

| | |
|-------------------|----------------|
| P - 1312020125010 | 1/2" / 32 ft. |
| P - 1312020125025 | 1/2" / 25 ft. |
| P - 1312020125050 | 1/2" / 50 ft. |
| P - 1312020125075 | 1/2" / 75 ft. |
| P - 1312020125100 | 1/2" / 100 ft. |

1/2" Shaft with thick casing

| | |
|-------------------|----------------|
| P - 1312021125050 | 1/2" / 50 ft. |
| P - 1312021125075 | 1/2" / 75 ft. |
| P - 1312021125100 | 1/2" / 100 ft. |

3/4" Shaft

| | |
|-------------------|-------------------------|
| P - 1312021180011 | 3/4" / 36 ft. extension |
| P - 1312021180020 | 3/4" / 67 ft. |

Ask about our Picote Full-Lineup Product catalog available now.

SLEEVES & BEARINGS

| Part Number | Description |
|-------------------|---------------------------|
| P - 93212329085SB | Sleeve, 1/3" THICK casing |
| P - 9312319125SB | Sleeve, 1/2" |
| P - 93212320125SB | Sleeve, 1/2" THICK casing |
| P - 93212319125BS | Bearing, 1/2" (Pkg of 10) |

STEERING AXLE & FINE TUNING TOOLS

| Part Number | Description |
|----------------|---|
| P - 1100100055 | Steering Axle 55 |
| P - 1100200001 | Bearing for Steering Axle |
| P - 1312024125 | Smart Steering Guide 4"/6" with bearing |
| P - 1312025125 | Smart Steering Guide 6"/8" with bearing |
| P - 1100500040 | Counter Weight Small |
| P - 1100500060 | Counter Weight Large |
| P - 1350150405 | Steering Wire 328 ft./100m |
| P - 1350000125 | Wire Hook for 1/2" shaft |
| P - 1350000085 | Wire Hook for 1/3" shaft |

TOOLS

| Part Number | Description |
|----------------|---------------------------------|
| P - 1100400001 | Bearing Cleanser |
| P - 1350000005 | Pliers |
| P - 1350000007 | Cutter For Steering Wire |
| P - 1350000018 | Shaft Rounder |
| P - 1350000006 | Sheath Cutter 1 |
| P - 1350000011 | Sheath Cutter 2 |
| P - 1350000012 | Cutter For Side Grinding Panels |
| P - 1350000008 | Hex Key 4mm |
| P - 1350000009 | Hex Key 3mm |
| P - 1350000010 | Hex Key 2.5mm |
| P - 1350000013 | Combo Hex Key 1-6mm |
| P - 1350000100 | Screws for hub disc - 12 pieces |
| P - 1350000001 | Wrench 8mm |

REPLACEMENT PARTS

| Part Number | Description |
|----------------|---------------------------|
| P - 9550000034 | Strain Relief Midi Miller |
| P - 9560000034 | Strain Relief Maxi Miller |

SMART CUTTER STARTER PACKAGES

| Part Number | Description |
|--------------------|--|
| P - 1010000050US | Starter Package 2" |
| P - 101000051SUS | Starter Package 2" with Twister |
| P - 1010000070SAUS | Starter Package 3" Aluminum |
| P - 1010000052SA | Starter Package 3" Aluminum with Twister |
| P - 1010000100AUS | Starter Package 4" Aluminum |
| P - 1010000150AUS | Starter Package 6" Aluminum |
| P - 1010000200AUS | Starter Package 8" Aluminum |

SMART CUTTER HUBS

| Part Number | Description |
|-----------------------|------------------------------------|
| SIX-PANEL HUBS | |
| P - 1001250100A | HUB 6-panel 4" & 6" for 1/2" shaft |
| P - 1001250150A | HUB 6-panel 6" & 8" for 1/2" shaft |

FOUR-PANEL HUBS

| | |
|-----------------|--------------------------------------|
| P - 1000835050A | HUB Aluminum 3" short for 1/3" shaft |
| P - 1001235050A | HUB Aluminum 3" short for 1/2" shaft |
| P - 1001235075A | HUB Aluminum 3" for 1/2" shaft |
| P - 1001240100A | HUB Aluminum 4" for 1/2" shaft |
| P - 1001240150A | HUB Aluminum 6" for 1/2" shaft |
| P - 1001240200A | HUB Aluminum 8" for 1/2" shaft |

TWO-PANEL HUBS

| | |
|----------------|--|
| P - 1000820050 | HUB 2" narrow with 2 panels for 1/3" shaft |
| P - 1000820075 | HUB 3" narrow with 2 panels for 1/3" shaft |

NO WEDGE

| | |
|----------------|---------------------------------------|
| P - 1000612025 | HUB 6.5x12x25 no wedge for 1/4" shaft |
| P - 1000615025 | HUB 6.5x15x25 no wedge for 1/4" shaft |
| P - 1000615030 | HUB 6.5x15x30 no wedge for 1/4" shaft |
| P - 1000615040 | HUB 6.5x15x40 no wedge for 1/4" shaft |
| P - 1000820040 | HUB 8.5x20x40 no wedge for 1/3" shaft |
| P - 1000820060 | HUB 8.5x20x60 no wedge for 1/3" shaft |

SMART CUTTER HUB DISCS

| Part Number | Description |
|----------------|-------------------------|
| P - 1000200020 | Wedged Hub Disc |
| P - 1000200035 | Hub Disc Small |
| P - 1000200040 | Hub Disc Large |
| P - 1000200050 | Hub Disc XL (6-panel) |
| P - 1000210035 | Steering Hub Disc Small |
| P - 1000210040 | Steering Hub Disc Large |

Picote Systems

Ask about our Picote Full-Lineup Product catalog available now.

**Drain Cleaning
& Reinstatements**

ORIGINAL CHAIN STANDARD MODEL

| Part Number | Description |
|----------------|---------------------------------|
| P - 1380065032 | 1¼" Original Chain for ¼" shaft |
| P - 1380084050 | 2" Original Chain for ⅓" shaft |
| P - 1380084070 | 3" Original Chain for ⅓" shaft |
| P - 1380084100 | 4" Original Chain for ⅓" shaft |
| P - 1380084150 | 6" Original Chain for ⅓" shaft |
| P - 1380105070 | 3" Original Chain - 10mm |
| P - 1380105100 | 4" Original Chain - 10mm |
| P - 1380105150 | 5-6" Original Chain - 10mm |
| P - 1380125070 | 3" Original Chain for ½" shaft |
| P - 1380125100 | 4" Original Chain for ½" shaft |
| P - 1380125125 | 5" Original Chain for ½" shaft |
| P - 1380125150 | 6" Original Chain for ½" shaft |
| P - 1380125200 | 8" Original Chain for ½" shaft |
| P - 1380125225 | 9" Original Chain for ½" shaft |



ORIGINAL CHAIN PREMIUM MODEL

| Part Number | Description |
|-----------------|--|
| P - 1380084050U | 2" Original Premium for ⅓" shaft (2 links) |
| P - 1380184050U | 2" - 8mm Original Premium (3 links) |
| P - 1380084070U | 3" Original Premium for ⅓" shaft |
| P - 1380084100U | 4" Original Premium for ⅓" shaft |
| P - 1380084150U | 5-6" Original Premium for ⅓" shaft |
| P - 1380125070U | 3" Original Premium for ½" shaft |
| P - 1380125100U | 4" Original Premium for ½" shaft |
| P - 1380125150U | 5-6" Original Premium for ½" shaft |
| P - 1380125200U | 8" Original Premium for ½" shaft |
| P - 1380125225U | 9" Original Premium for ½" shaft |
| P - 1380185100U | 4" Original Premium for ¾" shaft |
| P - 1380185150U | 5-6" Original Premium for ¾" shaft |
| P - 1380185200U | 8" Original Premium for ¾" shaft |
| P - 1380185250U | 9-10" Original Premium for ¾" shaft |
| P - 1380185300U | 12" Original Premium for ¾" shaft |

CYCLONE CHAIN STANDARD MODEL

| Part Number | Description |
|----------------|--|
| P - 1381084075 | 3" Cyclone Circular Chain for ⅓" shaft |
| P - 1381084100 | 4" Cyclone Circular Chain for ⅓" shaft |
| P - 1381084125 | 5" Cyclone Circular Chain for ⅓" shaft |
| P - 1381084150 | 6" Cyclone Circular Chain for ⅓" shaft |
| P - 1381105070 | 3" Cyclone Circular Chain for 10mm shaft |
| P - 1381105100 | 4" Cyclone Circular Chain for 10mm shaft |
| P - 1381105125 | 5" Cyclone Circular Chain for 10mm shaft |
| P - 1381105150 | 6" Cyclone Circular Chain for 10mm shaft |
| P - 1381125075 | 3" Cyclone Circular Chain for ½" shaft |
| P - 1381125100 | 4" Cyclone Circular Chain for ½" shaft |
| P - 1381125125 | 5" Cyclone Circular Chain for ½" shaft |
| P - 1381125150 | 6" Cyclone Circular Chain for ½" shaft |
| P - 1381125200 | 8" Cyclone Circular Chain for ½" shaft |
| P - 1381125225 | 9" Cyclone Circular Chain for ½" shaft |
| P - 1381125250 | 10" Cyclone Circular Chain for ½" shaft |

CYCLONE CHAIN STANDARD MODEL

| Part Number | Description |
|----------------|--|
| P - 1381084075 | 3" Cyclone Circular Chain for ⅓" shaft |
| P - 1381084100 | 4" Cyclone Circular Chain for ⅓" shaft |
| P - 1381084125 | 5" Cyclone Circular Chain for ⅓" shaft |
| P - 1381084150 | 6" Cyclone Circular Chain for ⅓" shaft |
| P - 1381105070 | 3" Cyclone Circular Chain for 10mm shaft |
| P - 1381105100 | 4" Cyclone Circular Chain for 10mm shaft |
| P - 1381105125 | 5" Cyclone Circular Chain for 10mm shaft |
| P - 1381105150 | 6" Cyclone Circular Chain for 10mm shaft |
| P - 1381125075 | 3" Cyclone Circular Chain for ½" shaft |
| P - 1381125100 | 4" Cyclone Circular Chain for ½" shaft |
| P - 1381125125 | 5" Cyclone Circular Chain for ½" shaft |
| P - 1381125150 | 6" Cyclone Circular Chain for ½" shaft |
| P - 1381125200 | 8" Cyclone Circular Chain for ½" shaft |
| P - 1381125225 | 9" Cyclone Circular Chain for ½" shaft |
| P - 1381125250 | 10" Cyclone Circular Chain for ½" shaft |



GRABBERS

| Part Number | Description |
|------------------|------------------------------------|
| P - 2370000001US | Picote Grabber |
| P - 2370000002 | Picote Grabber extension 10 meters |
| P - 2370000003 | Grabber Jaw Set 1 |
| P - 2370000004 | Grabber Jaw Set 2 |
| P - 2370000010US | Picote Large Grabber US |
| P - 2370000011 | Large Grabber Jaw Set 1 |
| P - 2370000012 | Large Grabber Extension 10 meters |

GRABBERS

| Part Number | Description |
|----------------|--|
| P - 1360080050 | Mini Smart Sweeper 2" for 1/3" shaft |
| P - 1360080051 | Smart Sweeper Head 1.57"-2" for 1/3" shaft |
| P - 1360080075 | Mini Smart Sweeper 3" for 1/3" shaft |
| P - 1360120100 | Mini Smart Sweeper 4" for 1/2" shaft |

SMART SPIDER

| Part Number | Description |
|----------------|--------------------------|
| P - 1390125102 | 4" Smart Spider |
| P - 1390125152 | 6" Smart Spider |
| P - 1390100001 | Smart Spider 4" legs |
| P - 1390100002 | Smart Spider 6" legs |
| P - 1390100005 | Smart Spider Rubber Flex |
| P - 1390100004 | Smart Spider Axle |

TWISTER MINI

| Part Number | Description |
|----------------|--|
| P - 1230000052 | 2"Twister Mini for 1/3" shaft |
| P - 1230000072 | 3"Twister Mini for 1/3" shaft |
| P - 1230000371 | 3"Twister Mini for 1/2" shaft/unlined pipe |
| P - 1230000471 | 3"Twister Mini for 1/2" shaft/lined pipe |

TWISTERS

| Part Number | Description |
|-----------------|--------------------------------------|
| P - 1230075100Y | 4"Twister for lined pipe (FP 3") |
| P - 1230085100Y | 4"Twister for unlined pipe (FP 3.3") |
| P - 1230115150Y | 6"Twister for lined pipe (FP 4.5") |
| P - 1231125150Y | 6"Twister for unlined pipe (FP 5") |
| P - 1230175200Y | 8"Twister (FP7") |

TWISTER EXPRESS

| Part Number | Description |
|----------------|--|
| P - 1233085102 | 4"Twister Express for unlined pipe (Front Drill Head 3.3") |
| P - 1233075102 | 4"Twister Express for lined pipe (Front Drill Head 3") |

TWISTER LINER REMOVERS

| Part Number | Description |
|-----------------|---|
| P - 1233075100 | 4" Liner Remover for lined pipe (FP 3") |
| P - 1233085100 | 4" Liner Remover for unlined pipe (FP 3.3") |
| P - 1231115150Y | 6" Liner Remover for lined pipe (FP 4.5") |
| P - 1230125150Y | 6" Liner Remover for unlined pipe (FP 5) |

TWISTER REPLACEMENT PARTS

| Part Number | Description |
|----------------|---|
| P - 1230000051 | Front Drill Head 3 Twister Mini 2" KIT |
| P - 1230000071 | Front Drill Head 3 Twister Mini 3" KIT |
| P - 1300213085 | Front drill head 3.3" plastic guard for Twister Express |
| P - 1300213075 | Front drill head 3" plastic guard for Twister Express |
| P - 1300212085 | Front drill head 3.3" with plastic guards |
| P - 1300212075 | Front drill head 3" with plastic guards |
| P - 1210410075 | Front Metal Panel 3" Liner Remover 3mm |
| P - 1210410085 | Front Metal Panel 3.35" Liner Remover 3mm |
| P - 1210410115 | Front Metal Panel 4.5" Liner Remover 3mm |
| P - 1210410125 | Front Metal Panel 5" Liner Remover 3mm |
| P - 1300214040 | Front Drill Head 4 Flat Liner Remover 40mm/1.6" |

SIDE GRINDING PANELS (10 PANELS)

| Part Number | Description |
|----------------|---|
| P - 1201040060 | Side Grinding Panel No Wedge 1½" x 2⅓" |
| P - 1201050100 | Side Grinding Panel No Wedge 2" x 4" |
| P - 1200050100 | Side Grinding Panel with Wedge 2" x 4" |
| P - 1200075125 | Side Grinding Panel with Wedge 3" x 5" |
| P - 1200100100 | Side Grinding Panel with Wedge 4" x 4" |
| P - 1200100150 | Side Grinding Panel with Wedge 4" x 6" |
| P - 1200150150 | Side Grinding Panel with Wedge 6" x 6" |
| P - 1200150200 | Side Grinding Panel with Wedge 6" x 8" |
| P - 1200150250 | Side Grinding Panel 6" x 10" |
| P - 1200200300 | Side Grinding Panel with Wedge 8" x 12" |

Picote Systems

Ask about our Picote Full-Lineup Product catalog available now.

**Drain Cleaning
& Reinstatements**

POLISHING PANELS (10 PANELS)

| Part Number | Description |
|----------------|----------------------------------|
| P - 1240050100 | Polishing Panel with Wedge 2"x4" |
| P - 1240075100 | Polishing Panel with Wedge 3"x4" |
| P - 1240100125 | Polishing Panel with Wedge 4"x5" |
| P - 1240100150 | Polishing Panel with Wedge 4"x6" |

PIPE CUTTING PANELS

| Part Number | Description |
|----------------|--|
| P - 1250000070 | 3" Panel Package - 4 panels |
| P - 1250000100 | 4" Panel Package - 4 panels & centralizers |
| P - 1250000150 | 6" Panel Package - 4 panels & centralizers |
| P - 1250100100 | Centralizer package 4" (3 parts) |
| P - 1250150150 | Centralizer package 6" (3 parts) |
| P - 9125000200 | Pipe Cutter 8" spare panels (6 panels) |
| P - 1250000101 | Pipe Cutter 4" Ultra Flex |
| P - 1250000151 | Pipe Cutter 6" Ultra Flex |
| P - 1250000200 | Pipe Cutter 8" Ultra Flex |

PANELS FOR MINI CLEANER (10 PANELS)

| Part Number | Description |
|----------------|------------------------------------|
| P - 1201025040 | Side grinding panel 1 1/4" package |
| P - 1201030050 | Side grinding panel 40mm package |
| P - 1240035045 | Cleaning panel 1 1/4" package |
| P - 1240040050 | Cleaning Panel 40mm package |

FRONT PANELS & DRILL HEADS

| Part Number | Description |
|----------------|--------------------------------|
| P - 1210310055 | Front Metal Panel 2.2" |
| P - 1210310075 | Front Metal Panel 3" |
| P - 1210310085 | Front Metal Panel 3.3" |
| P - 1210310115 | Front Metal Panel 4.5" |
| P - 1210310125 | Front Metal Panel 5" |
| P - 1210310175 | Front Metal Panel 7" |
| P - 1220210055 | Front Plastic Panel 2.2" |
| P - 1220210075 | Front Plastic Panel 3" |
| P - 1220210085 | Front Plastic Panel 3.3" |
| P - 1220210125 | Front Plastic Panel 5" |
| P - 1300212035 | Front Drill Head 3 Ridged 1.4" |

SPECIAL DRILL HEAD CUTTERS

| Part Number | Description |
|----------------|--|
| P - 1310820029 | Special Drill Head Cutter 8x20x29 - 1/3" shaft |
| P - 1310812029 | Special Drill Head PVC 8x23x29 - 1/3" shaft |
| P - 1310812042 | Special Drill Head PVC 8x20x42 - 1/3" shaft |
| P - 1310813055 | Special Drill Head PVC 8x30x55 - 1/3" shaft |
| P - 1311213055 | Special Drill Head PVC 12x30x55 - 1/3" shaft |
| P - 1311214071 | Special Drill Head PVC 12x40x55 - 1/3" shaft |
| P - 1311215091 | Special Drill Head PVC 12x50x91 - 1/3" shaft |

PICOTE COATING SYSTEM

| Part Number | Description |
|----------------|---|
| P - 2220100002 | Mini Coating Pump |
| P - 2220100004 | Resin Supply Hose - 82ft |
| P - 2220100003 | Delivery Hose - 82ft |
| P - 2220100007 | Hose connector with hose clamps |
| P - 9500000382 | Hose clamp 10mm |
| P - 9500000381 | Hose clamp 13mm |
| P - 900000338 | Brush stopper 1/3" |
| P - 2220200003 | Pumping Hose package 10 pcs |
| P - 2220200005 | MXM Coating Pump delivery hose 200m/60ft: 200m in a package |

RESINS & BRUSHES

| Part Number | Description |
|----------------|--|
| P - 2220200004 | Coating Resin Cup package 10pcs |
| P - 2110000501 | Coating Resin - 12oz |
| P - 2110000502 | Coating Resin - 17lb 11oz |
| P - 2110000503 | Coating Resin - 35lb 5oz |
| P - 2120000037 | Brush 1 1/4" pipe (for 1/4" shaft) |
| P - 2120000050 | Brush for 1 1/4" pipe (for 1/3" shaft) |
| P - 2120000075 | Brush for 2" pipe (for 1/3" shaft) |
| P - 2120000100 | Brush for 3" pipe (for 1/3" shaft) |
| P - 2120000125 | Brush for 4" pipe (for 1/3" shaft) |
| P - 2120000175 | Brush for 6" pipe (for 1/3" shaft) |
| P - 2120000220 | Brush for 8" pipe (for 1/3" shaft) |



(877) 450-3701 • www.S1Eonline.com

PIPE TREKKER



The Trenchless industry's first truly portable, battery-operated pipe inspection crawler system

Utilizing over a decade of design principles from building underwater robotics, our pipe crawlers are built to outlast and outperform. Constructed of machined aluminum and steel alloy, Pipe Trekker's rugged crawler configurations get you more time in the field, and less time in the shop. Our crawlers are piloted through extremely intuitive controller systems, requiring minimal training before an operator can comfortably deploy. Unmatched portability, versatility, and accessibility allows for limitless applications of pipe cleaning, lining, or televising crews rather than relying on a dedicated TV truck crew for all inspections.



The world's first and only fully battery-operated, portable pipe crawler to move quickly and easily to even the most remote manholes.

***Magnetically Coupled Drives
High Definition Camera
Hybrid Power Options
Fully Submersible
Battery Operated
Durable***



PIPE TREKKER CAMERA SYSTEMS

| Part Number | Description |
|---------------|---|
| PT-A-200-BASE | Crawler Body, 8" wheels, Lifting Kit, Charger, Batteries and Carry Case |
| PT-A-200S | Base system, PTZ 1080p IP Camera, Elevating Arms, 7" LCD Hand Control |
| PT-A-200X | Base system, PTZ 1080p IP Camera, Elevating Arms, 10" Touch Screen |

S1E Mainline Camera System

CONQUEST

Pipeline Inspection Camera

A Source One Environmental Product

Inspection
Systems



PRODUCT OVERVIEW

Delivering great performance in a compact portable design, the Conquest sewer camera is an open-reel camera system for general inspection and locating jobs in 2" to 4" pipe sizes. It features a waterproof, stainless steel camera head and 100-foot fiberglass push rod. The 7-inch monitor, SD card recording, easily interchangeable parts and 6-hour battery provides the portability and versatility to handle any inspection job.

PARTS AND ACCESSORIES

| Part Number | Description |
|-------------|---|
| CNQ-CAMSYS | Conquest Camera |
| CNQ-C23MT0 | 23mm Camera Head with 512 Hz Sonde |
| CNQ-C23MTS | 23mm Camera Head with 512 Hz Sonde and Self-Leveling |
| CNQ-A18001 | Control Box |
| CNQ-R1330U | Cable Reel with 6.8mm Push Rod, 30m |
| CNQ-M1330U | Rotating Cable Reel and Metal Frame |
| CNQ-F6830N | 6.8mm Push Rod, 30m |
| CNQ-A18002 | Slip Ring with Meter Counter |
| CNQ-CAMBTRY | Battery Pack |
| CNQ-A18006 | Display Panel and LCD Screen |
| CNQ-8-901 | Plastic Guide (80mm) for 23mm Camera Head |
| CNQ-8-923 | Plastic Guide (46mm) for 23mm Camera Head |
| CNQ-K7924K | Wireless Keyboard and Adapter for Text Input on Monitor |
| CNQ-A18007 | 6-pin Connection Cable from Control Box to Cable Reel |
| CNQ-2-312 | Conquest Power Adapter, DC 12V 1.5A |
| CNQ-A18014 | Cable Stop Housing |
| CNQ-A18021 | Conquest DC Charging Dock |
| CNQ-A18023 | Conquest Push Rod Cable Guide |
| CNQ-A18024 | Control Box Receptacle |

FEATURES

- Pipe sizes: 2" to 4"
- 6.8mm (1/4") push rod diameter
- 100' push rod length
- 23mm camera head
- Built-in 512 Hz sonde
- Smart Braking System
- Weight: 23 lbs
- IP68 waterproof level
- 100'/30m fiberglass push rod
- 7" monitor with recording
- Stainless steel camera head
- SD card and reader included
- On-screen distance counter
- Rechargeable battery lasts up to 6 hours
- Wireless keyboard for text input (English)
- Whole system waterproof (box closed)
- Power adapter and car charger included

S1E Video Inspection System



S1E MS11-NG2

- Designed for 3" - 6" lines
- 150' or 200' pushrod
- 6.5" daylight-readable monitor
- Includes interchangeable 1.5" dia. fixed-position, self-leveling camera head
- Powder-coated aluminum frame
- 13"W x 20"L x 21"H and weighs 45 pounds
- USB flash drive and Wi-Fi router
- Set of ice-ball camera guides with outside diameters of 1 1/2", 1 7/8", and 2 1/4"

S1E 512+ HEAD LOCATOR

- Allows locating in all pipes including cast iron
- Detects 512Hz signal from sondes and S1E cameras
- Works with 640Hz, 8kHz and 33kHz frequencies
- Backlit digital display for low-light reading
- Intuitive operation with audio signal
- Includes padded case and batteries



S1E Combo

- Includes a mini camera head that is interchangeable with the S1E MS11-NG2 mid-size camera head
- Includes a protective case for both heads and all the guides
- Kit includes the mini camera and the ice ball guide with 3" outside diameter, dialectic grease, and a slot for everything included with the S1E MS11-NG2

Push Camera System

| Part Number | Description |
|----------------|---|
| S1E-MS11-NG2 | 3"-6" Lines w/ 200ft Push Rods / 45lbs. |
| S1E-MS11-COMBO | 1-1/2"-6" Lines w/ Combo Kit |

S1E LEAK DETECTOR

- Sensitive sensor detects hissing, trickle, or seeping sounds
- Great for detecting slab leaks, including through through carpeting
- 4 sensor tips are provided for different surfaces
- Probe detects leaks in vertical or overhead pipes, faucets, hose bibs, angle stops



S1E Camera Locator & Detection Systems

| Part Number | Description |
|-------------|-------------------------------------|
| S1E-RL8873 | Digital Depth - Camera Head Locator |
| S1E-LD40 | Leak Detection System w/ Case |

Spot Repairs & Manhole Rehabilitation

GREYCOAT EPOXY *Rehabilitation & Structural Spot Repairs*

GreyCoat Epoxy is a premium 100% solids epoxy that offers outstanding chemical resistance and lasting durability with adhesion to concrete substrates and metal surfaces. Ideal for manholes, wet walls, vaults and more, GreyCoat Epoxy creates a structural repair that is permanent and adds structural integrity to the repair area.



GCE-6KIT

| Part Number | Description |
|-------------|-------------------------------|
| GCE-6KIT | Epoxy Kit- 6 sq. ft. coverage |

BASEMENT REPAIR KIT



Designed to repair leaks up to a 10 ft. crack in solid or poured concrete, stone and brick walls.

| Part Number | Description |
|-------------|--------------------------------|
| BCR-KIT | Epoxy Kit- 10 sq. ft. coverage |

Complies with NSF/ANSI 372 (Powerstick)



Pow-R Wrap - Fiberglass Wrap

Pow-R Wrap is a water activated fiberglass wrap that permanently repairs wet or dry pipe and hose. Pow-R Wrap is a self-contained kit including everything you need to repair a magnitude of applications.



| Part Number | Description |
|-------------|---|
| FPW248CS | 2" x 48" wrap, repairs up to 1" pipe |
| FPW3132CS | 3" x 132" wrap, repairs 1 1/4" to 3" pipe |
| FPW4252CS | 4" x 252" wrap, repairs 3" to 6" pipe |

Pow-R Patch - Epoxy Patch

| Part Number | Description |
|-------------|---------------|
| FP-P46 | 4" x 6" patch |

Pow-R Wrap Industrial - Large Dia. Wrap

| Part Number | | Description | | | |
|---------------------------------------|---------|--|----------|----------|----------|
| FPW8540S-1 | | 8" x 540" wrap, repairs up to 50" pipe | | | |
| PIPE OUTSIDE DIAMETER | 8"- 18" | 20"-24" | 26"- 34" | 36"- 42" | 44"- 50" |
| Number of Kits REQUIRED for Pipe Size | 1 KIT | 2 KITS | 3 KITS | 4 KITS | 5 KITS |



Manhole Repair Solutions



STABILIZE SOIL & CREATE A WATER TIGHT BARRIER

I&I Guard[®]-MSF (Soil Stabilization Foam) is designed to both remediate infiltration and stabilize soil by migrating beyond the structure into the loose soil and into below-grade voids. As the material begins to react it expands to form a rigid foam, forming a water tight barrier.



EXTREME CORROSION PROTECTION & FULL STRUCTURAL LINING

Structure Guard[®] is a 100% solids epoxy lining system. Extremely corrosion resistant and contains no VOCs, it is typically used for protective lining or as a top coat in structural lining composite systems that employ Quadex Repair Materials such as QM-1s Restore[®].



CURTAIN GROUT AND SOIL STABILIZATION

Injected at the leak source, **I&I Guard[®]-SSF** polyurethane foam grouts are designed with a wide range of densities to fill deep voids and address I&I threatening eminent sinkhole conditions.



MANHOLE MAJOR DEFECTS

When age and deterioration leads to cracks, defects, deterioration and leaks, **Hyperform[®]** is a single component, rapid-setting, high early strength patching mortar.



LEAKING INVERTS & LATERALS

I&I Guard[®]-PRF is a dual component hydrophobic polyurethane grout, with a 1-3 second reaction time. Perfect for running or gushing leaks, up to 50 GPM (189 LPM).

CHIMNEY/ CONE SEALING



Freeze/thaw conditions ultimately lead to expansion and contraction, a common cause of infiltration in manhole chimneys. **Chimney Guard[™]** is a hybrid epoxy urea coating. It is ready to use, does not require a primer and offers 270% elongation to prevent this very common situation.

PERSISTENT WATER SEEPAGE



I&I Guard[®]-SCF is a deep penetrating, single component, closed cell, pre-catalyzed, hydrophobic grout. Works best where leaks are slow, allowing the foam to reach and set deeper behind the crack.

LOW FLOW LEAKS



Quad-Plug[®] is a blend of hybrid cements and admixtures developed to instantly stop water seepage, up to 5 GPM (19 LPM), in concrete and masonry structures.

FULL STRUCTURAL RENEWAL & CORROSION PROTECTION



QM-1s Restore[®] can be used as a stand alone structural, mild corrosion resistant lining or as underlayment in both semi and fully structural composite systems when restoring the entire manhole structure.

DETERIORATED BENCHES



Hyperform[®]-RS is a rapid setting patching material designed for concrete and masonry structures. It can be easily shaped and sets up in 3-5 minutes.



REPAIR MATERIALS

All Quadex products are produced with the environment in mind, and developed in strict accordance to ASTM and similarly substantiated industry standards. When combined with the Quadex sprayMASTER™ II coatings system, the result is a precision applied coating that delivers high performance and decades of uninterrupted service.



STRUCTURE GUARD®-FM

Micro-Fiber Reinforced Mastic

Structure Guard®-FM is a 100% solids epoxy mastic used to protect new infrastructure and to rehabilitate existing, damaged, infrastructure.

Application Method: Trowel applied

Recommended For

- Manholes, wet wells, vaults and septic tanks
- Steel substrates
- Floor and wall penetrations/ cracks
- Simple spot repair
- Extreme bonding to nearly all substrates
- Fast curing
- Easy workability
- ¼" build capability with no sag
- No mixing means faster application

Features and Benefits

- 100% solids epoxy
- No harmful VOCs
- Convenient and easy to use



STRUCTURE GUARD®-RS

Corrosion Resistant Epoxy Protective Coating

Structure Guard®-RS is a 100% solid, high-build epoxy coating formulated to provide long-term corrosion protection and structural enhancement for manholes, pump stations, treatment plants or any wastewater infrastructure subject to high levels of corrosion and/or abrasion. Structure Guard-RS sets fast for a quick return-to-service in the most aggressive and turbulent environments. It finishes smooth to enhance flow and is utilized as an interior or exterior pipe lining. It is also ideal for invert repairs.

Application Method:
Trowel applied

Recommended For

- Inverts
- Manhole bottoms
- Benches

Features and Benefits

- 100% Solids, No VOCs
- Fast set time
- Excellent corrosion and abrasion resistance



FLEX GUARD™-FM

Flexible Epoxy Mastic

Flex Guard™-FM is a flexible fiber reinforced epoxy mastic for application on metal and concrete substrates, cracks or joints that experience movement. With a 100-150% elongation it is ideal for freeze/thaw and structures that experience temperature fluctuations.

Application Method: Trowel applied

Recommended for Joints / Gaps /
Cracks / Holes

Features and Benefits

- Fiber reinforced
- Flexible, 100-150% elongation
- Quick cure time



CHIMNEY GUARD™

Flexible Manhole Chimney Coating

Chimney Guard™ is a one step, durable chimney seal made from a 100% solids Epoxy/Urethane hybrid. It is designed to provide a highly flexible and securely bonded seal prepared to address heavy traffic loading, extreme freeze/thaw and infiltration.

Application Method: Trowel applied

Recommended for flexible coating
on surfaces that experience extreme
freeze/thaw or heavy traffic loading.

Features and Benefits

- High build monolithic coating / 100 mils per coat
- Superior adhesion to steel, concrete and brick
- Permanent flexibility at low temperature



Corrosion Resistance
High



HYPERFORM™ HYPERFORM™-RS

Hyperform™ (White Lid) is a one component, rapid-setting, high early strength patching material designed for repairing vertical and horizontal concrete and masonry structures. With invert lining, flow can be released with 25-30 minutes post mixing.

Application Method: Trowel applied

Features & Benefits

- Rapid-setting
- High early and ultimate strengths
- Non-shrinking
- No calcium chloride
- Ready to use - just add water
- Excellent resistance to freeze/thaw



Recommended For:

Filling large voids in manhole walls, reconstructing inverts, catch basins and pipe repair.

Hyperform™-RS (Blue Lid) is a rapid-setting cement (3-5 minutes)

Recommended For: Repairing vertical and horizontal concrete and masonry structures.



I&I GUARD™

Quadex I&I Guard is quick response dual component hydrophobic polyurethane with a 1 - 3 second reaction time. It is designed to stop rapid water flow (>50 GPM) leaking from concrete or other underground structures. Since I&I Guard is hydrophobic, it will not shrink, contains no VOCs and requires no special breathing apparatus or other PPE.

I&I Guard®-SCF is a single component hydrophobic polyurethane grout designed to stop water infiltration while at the same time filling voids, cracks and joints.



I&I Guard®-SCF 200 is a single component, moisture-activated and MDI/TDI blended polyurethane injection grout designed for sealing persistent water leaks from large cracks or leaking joints in concrete structures.



I&I Guard®-PRF is a two-part polyurethane grout used to stop high flow infiltration.



I&I Guard®-MSF (Soil Stabilization Foam) is a low viscosity, polyurethane injection resin, designed to stabilize soil.



QUAD-PLUG™

Quad-Plug™ is a blend of hybrid cements and admixtures designed to instantly stop running water or seepage in all types of concrete and masonry structures.

Application Method: Rubber gloves

Features & Benefits

- Stops running water immediately
- Non-shrink, expands as it sets
- Contains no calcium chloride
- Non-metallic and Sulfate resistant

Recommended For: Sewer pipes and manholes, concrete tanks, elevator pits, cisterns, basements, concrete and masonry walls.



QM-1S RESTORE™

QM-1s Restore® can be used as a stand alone structural, mild corrosion resistant lining or as underlayment in both semi and fully structural composite systems when restoring the entire manhole structure. Can be epoxy coated after 24 hours and full cure after 28 days. 60 lbs. bag covers 51 cubic ft. 12 sq. ft. at 500 mils (1/2").



QUADEX REPAIR MATERIALS

| Part Number | Description |
|-------------------------|--|
| QUAD-SG-FM1.5 | Structure Guard - 1.5 Gallon Kit Epoxy |
| QUAD-SG-FM6/3 | Structure Guard - 600mlx300ml Epoxy |
| QUAD-SG-RS6/3 | Structure Guard - Rapid Setting Epoxy 600x300ml |
| QUAD-SG-QS | Structure Guard - Quick Spray 4-gal Kit |
| QUAD-SG-WATER | Structure Guard - (6) 600mlx300ml Epoxy |
| QUAD-FG-FM600 | Flex Guard - Flexible Epoxy (6) 600ml Cartridges |
| QUAD-CG-KIT | Chimney Guard - Epoxy/Urethane 2-Part Kit |
| QUAD-QM-1S | Qm-1S Restore - Compare to Portland Cement #60 Bag |
| QUAD-HF-50 | Hyperform - Fast Curing Cement - #50 Pail |
| QUAD-HF-60 | Hyperform - Fast Curing Cement - #60 Bag |
| QUAD-HF-RS | Hyperform RS - Rapid Setting - #50 Pail |
| QUAD-PLUG | Quad Plug - Hybrid fast acting Cement / #50 Pail |
| QUAD-I&I-SCF5 | I&I - Single Component Grout 5-gallon Pail |
| QUAD-I&I-SCF600 | I&I - Single Component Grout 600ml Cartridges |
| QUAD-I&I-SCF1200 | I&I - Single Component Grout 1200ml Cartridges |
| QUAD-I&I-SCF200-GEL600 | I&I - Single Component Gel / 600ml Cartridges |
| QUAD-I&I-SCF200-GEL1200 | I&I - Single Component Gel / 1200ml Cartridges |
| QUAD-I&I-SCF200-GEL5GAL | I&I - Single Component Gel / 5-gallon Pail |
| QUAD-I&I-PRF-600 | I&I - Fast Curing Grout (12) 600ml Cartridges |
| QUAD-I&I-PRF-1200 | I&I - Fast Curing Grout (6) 1200ml Cartridges |
| QUAD-I&I-MSF5 | I&I - Migration Foam Grout / 5-gallon Pail |

Epoxy & Grout Guns

Battery Operated, Dual Component Dispenser

Quadex OneGun® is systematically designed to deploy the Quadex line of cartridged repair materials, whether in "1 to 1" or "2 to 1" ratios.

OneGun's 20 Volt Lithium-Ion Battery will deliver up to three hours of continuous power in the most extreme conditions.

Benefits of using OneGun with Quadex patching and sealing products:

- One delivery method, multiple repair materials
- Battery operation eliminates cords and hoses from the work area
- Resealable cartridges eliminate material waste
- Durable design to exist in the toughest of environments



| Part Number | Description |
|---------------|---------------------------------|
| QUAD-ONEGUN | 1200ml Epoxy Delivery Gun |
| QUAD-ONEGUN-M | MINI - 300ml Epoxy Delivery Gun |

I&I Guard Dual Component Caulk Gun



| Part Number | Description |
|------------------|---|
| QUAD-M-ONEGUN600 | Caulk Gun for 300ml x 300ml / 300ml x 150ml |

I&I Guard Dual Component Caulk Gun



| Part Number | Description |
|------------------|---|
| QUAD-M-ONEGUN900 | Caulk Gun for 450ml x 450ml / 450ml x 225ml |

I&I Guard Dual Component Caulk Gun



| Part Number | Description |
|-------------------|---|
| QUAD-M-ONEGUN1200 | Caulk Gun for 600ml x 600ml / 600ml x 225ml |

I&I Guard Dual Component Caulk Pneumatic Gun



| Part Number | Description |
|--------------|---|
| QUAD-DCGUNPN | Caulk Gun for 600ml x 600ml / 600ml x 300ml / 300ml x 300ml |



White Paper Results Exceed ASTM F1216 Standards

Today's most innovative systems for lateral and mainline pipe rehabilitation is CIPP (Cured-in-Place Pipe Lining). Plumbers, Contractors, Municipalities and others have embraced this "trenchless pipe repair" technology. No-Digging of yards or sidewalks, and reducing road closures and traffic backups during repairs is now a cost-saving consideration.

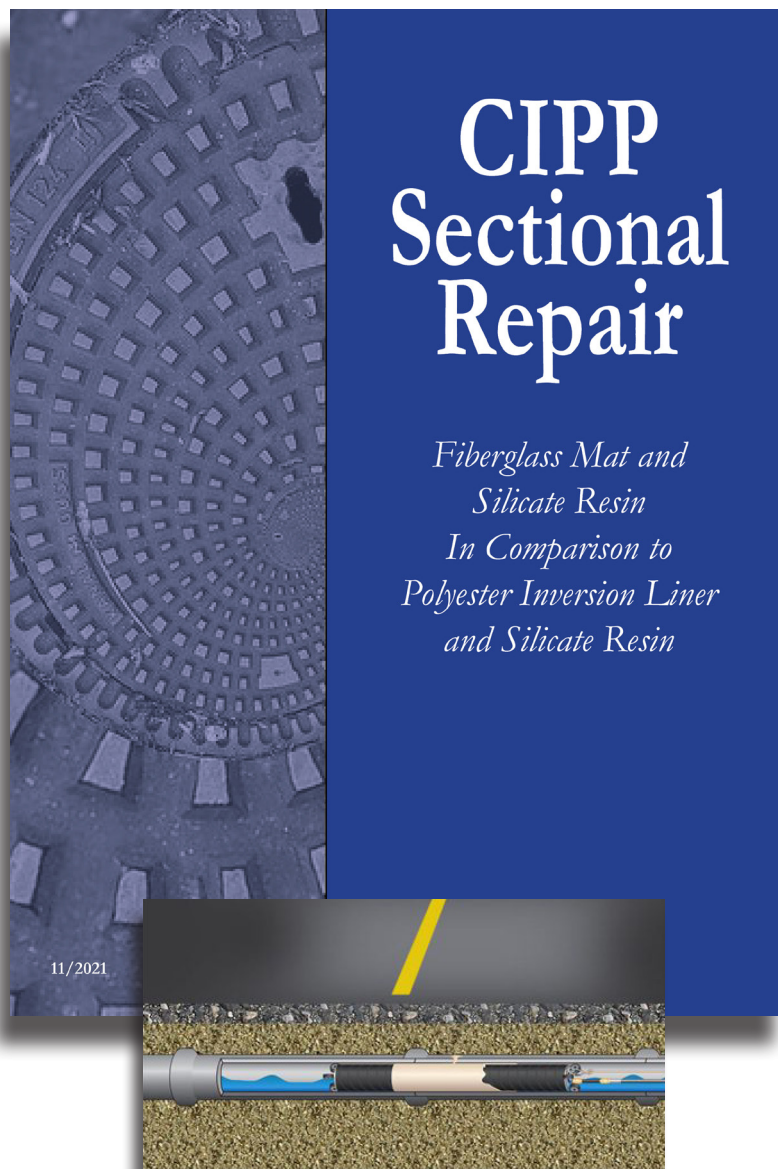
Quality assurance and quality control testing of CIPP installations is required to confirm that the materials used comply with the site and engineering requirements. Since ground and ambient installation conditions as well as crew skills can affect the success or failure of a cure cycle, ASTM F1216 Testing is performed by independent laboratories in normal cases.

ASTM F1216 Standards

S1E submitted a test sample to an independent third-party laboratory to perform a CIPP Sectional Repair in a piece of 4-inch SDR 35 pipe.

The testing data disclosed the average flexural strength and the average flexural modulus. The findings also revealed if the CIPP sectional repair method meets, exceeds, or fails to comply with ASTM F1216 standards.

The ASTM F1216* standard titled, "Standard Practice for Rehabilitation of Existing Pipelines and Conduits by the Inversion and Curing of a Resin-Impregnated Tube," requires that an installed patch once fully cured meet or exceed a minimum Flexural Strength and Flexural Modulus. It further specifies the test method, ASTM D790, to be used to determine the given Flexural Strength and Flexural Modulus.



Testing of the S1E PipePatch Kit revealed the patch not only met the required minimums, but far exceeded the Strength and Modulus compliance standard (*see below*).

| | |
|---|--------------------|
| Flexural Strength (Min.) | 4,500 psi. |
| S1E Flexural Strength | 25,245 psi. |
| Exceeds the minimum requirements | |

| | |
|---|---------------------|
| Flexural Modulus (Min.) | 250,000 psi. |
| S1E Flexural Modulus | 841,138 psi. |
| Exceeds the minimum requirements | |



SOURCE ONE ENVIRONMENTAL

WORLD HEADQUARTERS

300 S. Dayton Street
Davison, Michigan 48423
(877) 450-3701

CANADIAN OPERATIONS

850 Phillips St. E.
Sarnia, Ontario N7T 1Z6
(519) 332-6711

WEST OPERATIONS

855 Linda Way
Sparks, Nevada 89431
(800) 521-1283

WWW.S1EONLINE.COM

04/2023