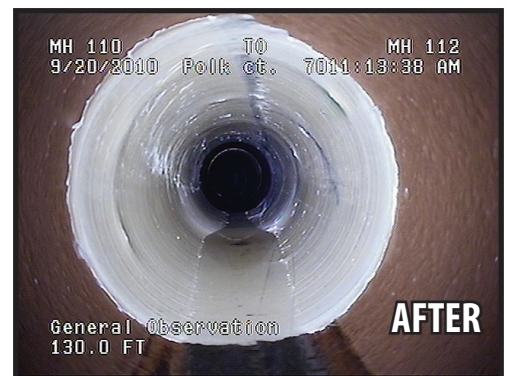
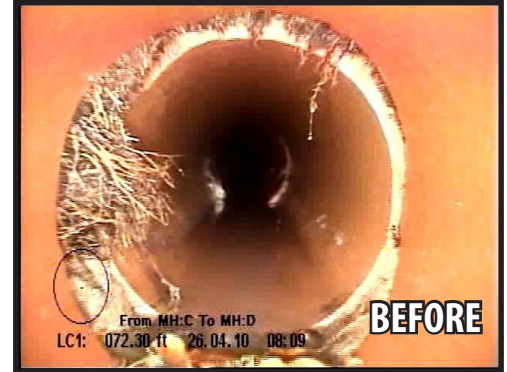


TRENCHLESS PIPE REHABILITATION



BRING ON THE HEAT

Eliminate infiltration by creating point repairs with **The Phoenix Heated Repair System**. By using The Phoenix, your business will save **50% of cure time** and increase total effectiveness during every season. The Phoenix is a packer with an internal heater, ensuring full control of the hardening process regardless of the outside temperature. The display on the heated control unit shows the actual temperature of the packer, allowing you to regulate the entire curing process and increase daily work capacity throughout the year. Working through summer and winter conditions, its high quality and effectiveness in the field makes The Phoenix unique to the world market and will give your business a competitive edge.



 **The Phoenix**
by Source One Environmental



Your 1 Source for Infrastructure
& Water Management Solutions

(877) 450-3701 • www.S1Eonline.com

TRENCHLESS PIPE REHABILITATION



Repair through summer and winter conditions in 1/2 the time



TECHNICAL SPECS

- Tensile strength : 24,5000 psi
- Flexural strength: 27,500 psi
- Flexural modules: 1,345,000 psi
- Resistant to 63+ chemicals and oils
- Non-flammable and non-hazardous
- Cures in the presence of water
- Structural properties exceed ASTM F 1216 requirements
- Heater powered by 230 V or 110 V
- Preprogrammed control unit with digital display and PFI relay

| Part Number | Description |
|------------------|--|
| FPP-PACK4-6X48H | 4-6" x 48" Heated Repair Packer |
| FPP-PACK4-6x24H | 4-6" x 24" Heated Repair Packer |
| FPP-PACK6-10X48H | 6-10" x 48" Flow-Thru Heated Repair Packer |
| FPP-BAG1-HEAT | 4-6" x 24" Packer Carry Bag |
| FPP-HTRC W/CORD | Heat Control Unit Box |
| FPP-BAGCONTROL | Heat Control Unit Bag |
| FPP-CNTRLCORD | Heat Control Unit Cord |



Your 1 Source for Infrastructure
& Water Management Solutions

(877) 450-3701 • www.S1Eonline.com