

# KRYSTOL INTERNAL MEMBRANE (KIM)

## KIM

Krytol Internal Membrane or KIM is the world's first integral crystalline concrete waterproofing admixture. KIM turns your concrete mass into a waterproof barrier. KIM is used in place of externally applied surface membranes to protect against moisture transmission, chemical attack and the corrosion of reinforcing steel.

- Lowers the cost of waterproofing by as much as 40%
- Helps to shave weeks off of construction schedules
- Reduces the cost of maintenance and repairs
- Permeability Reducing Admixture for Hydrostatic Conditions (PRAH) per ACI 212.3R-10 Chapter 15
- Increases reliability and quality control
- Increases revenues with a larger building footprint
- Safe for contact with potable water and Certified by NSF to NSF/ANSI Standard 61 Drinking Water System Components – Health Effects
- Available in 5 kg & 25 kg resealable pails or custom sized mixer-ready bags for your mix design.

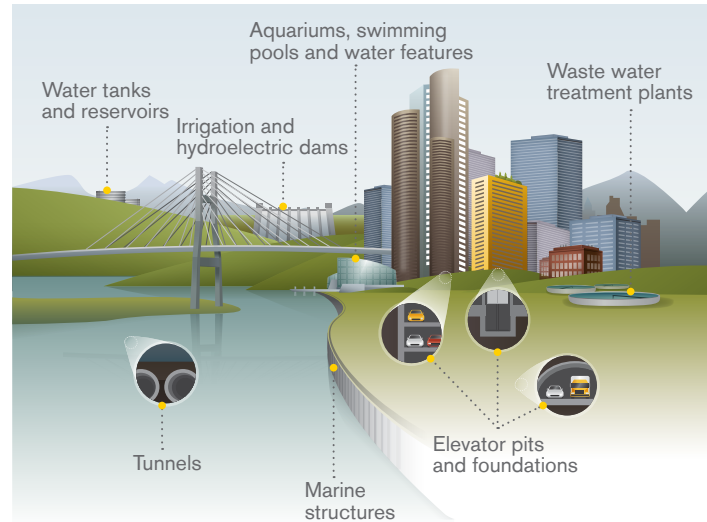
## HOW KIM WORKS

When combined with water KIM's proprietary chemicals react to form millions of needle-like crystals. These crystals grow and fill the capillary pores and micro-cracks in the concrete, blocking the flow of water. As time passes and stresses form new cracks, any incoming moisture causes the crystals to reactivate ensuring continuous waterproofing over the years.

## CITYCENTER, NEVADA, USA

Krytol's KIM waterproofed the valet tunnel, elevator pits, all other critical below grade structures and areas, plus the swimming pools and water tank that supports the water features during Cirque du Soliel's show in this massive LEED Gold project. Even more impressive, the water tank is located deep in the ground, into the middle of the active aquifer. Krytol Waterstop System was also used in the below grade structures to waterproof the construction joints. CityCenter is home to one of the largest public art collections in the United States and several luxury hotels including: the Mandarin Oriental, Vdara and the Aria Resort and Casino.

# A WORLD OF APPLICATIONS



KIM is recommended for all concrete that will be subject to water pressure and can be used in pre-cast, cast-in-place and shotcrete applications.

- Below grade parking
- Basements
- Sewage plants
- Swimming pools
- Dams
- Foundation walls
- Footings
- Slabs
- Pits
- Water containment tanks
- Canals

# WHY KIM:



- Save time and money by eliminating the waterproofing sub-trade on your next project.
- Protects from water getting in or out of your structure.
- Extends the life of your structure.
- Backfill sooner (no need to wait for external membranes to be applied).
- Safe for potable water and ideal for pools and water reservoirs.

# WHY KRYTON: THE MOST EFFECTIVE CONCRETE WATERPROOFING SYSTEM IN THE WORLD

- Proven Krytol technology, that ensures waterproofing for the life of the structure.
- Well-defined, step-by-step installation process that ensures success.
- 24/7 field-level support that provides answers and guidance wherever and whenever you need them.
- Independently accredited proof of performance. Krytol works with industry, academic, and governmental bodies around the world to develop certification standards and testing methodologies.
- Assurance from the leading warranty in the industry.



## KIM IN THE FIELD

### 700 WEST 8<sup>TH</sup>



700 West 8<sup>th</sup> Vancouver, BC, Canada

KIM was added to the shotcrete mix used to tank over 700 cubic meters of concrete perimeter walls.

*"Using Kryton's KIM in the shotcrete as the concrete waterproofer helped us complete the project on time with a fast paced schedule. Due to our success on 700 West 8th, we have been using Kryton's Krystol Waterproofing System on a variety of other projects in different parts of the lower mainland of BC"*  
- Bryan Tucker, VP of Construction for ICON Pacific.

### 55 ALLEN PLAZA



55 Allen Plaza, Atlanta, USA

The below grade walls were built from the top down, rather than digging down, using single-sided forming against the dirt. The developer used KIM to waterproof because the shoring wall didn't leave room for installing conventional membranes.

*"Kryton is a great team to work with and we are extremely impressed with their waterproofing products. Their products do what they promise to do. Even though there's water behind the walls at 55 Allen Plaza, it's not leaking through the concrete because of Kryton's crystalline technology."*

- Rick Anderson, President of ABE.



Offices in Canada, USA, UK, Singapore, India, and Dubai. Plus with over 50 distributors worldwide, there is a Kryton distributor near you.

Find yours today: [www.kryton.com](http://www.kryton.com)



BE SURE. BE KRYTON.

#### Kryton International Inc.

1645 East Kent Avenue  
Vancouver, BC Canada V5P 2S8  
Tel: 1.604.324.8280  
Fax: 1.604.324.8899  
Toll Free: 1.800.267.8280  
Email: [info@kryton.com](mailto:info@kryton.com)

# WATERPROOF & POUR YOUR CONCRETE IN 1-STEP

With Krytol Internal Membrane™ (KIM®)  
Concrete Waterproofing Admixture



BE SURE. BE KRYTON.

*Santa Lucia Canal, Mexico  
Waterproofed with KIM.*