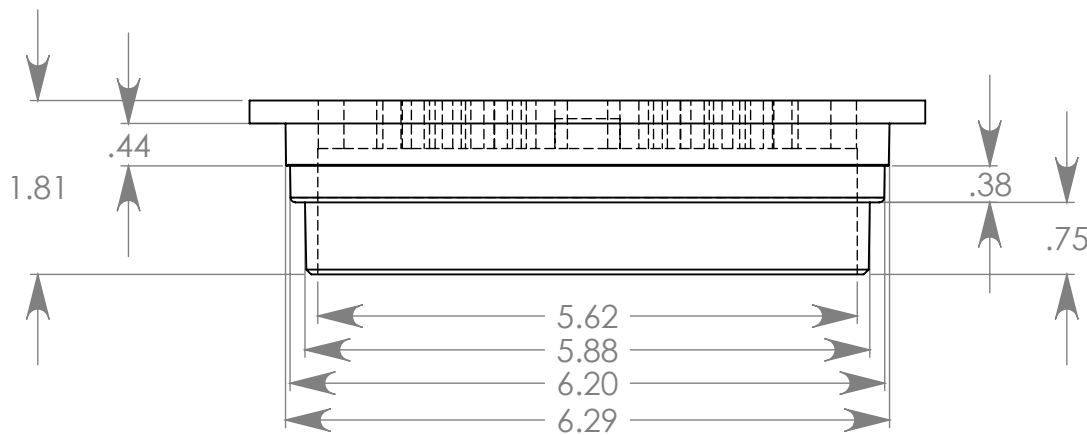


Material:	Polyethylene
Open Area:	8.2 sq. in.
Flow Rate:	10.7 GPM
ADA:	Yes
Wt. Class:	B
Heel:	Yes
Color:	Green



Use with Catch Basins; (FSD-060-CB, FSD-060-CB-1, FSD-060-CB-2)
 Bottom Outlet Connects to; 6" (S&D Pipe, S&D Hub, Corrugated, Sch 40)

FSD-060-R
 Rnd Grt Bottom Outlet
 17Oct13