



SOURCE **ONE** ENVIRONMENTAL

PRODUCT CATALOG

RESIDENTIAL

MUNICIPAL

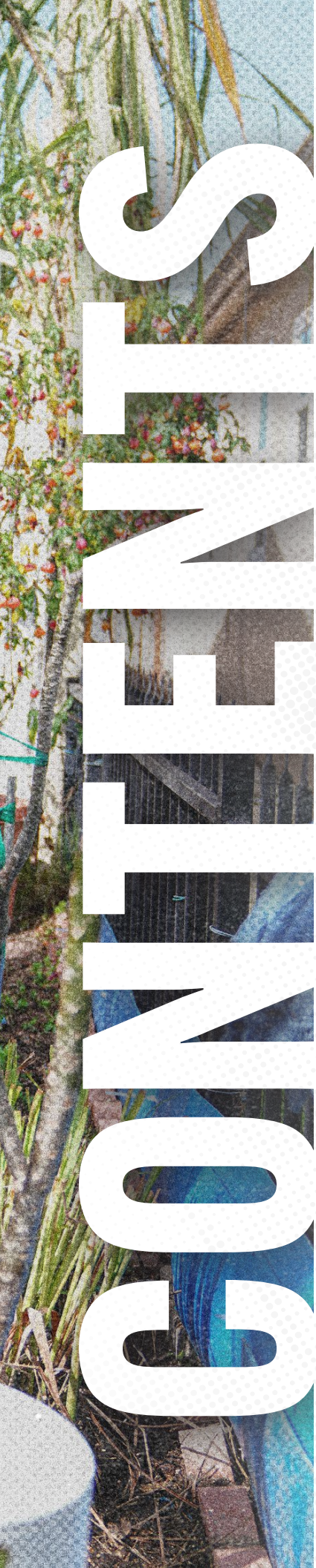
COMMERCIAL

RAIL

SCAN HERE FOR
DIGITAL COPY







TRENCHLESS PIPE REHABILITATION

PIPEPATCH SOLUTIONS

PipePatch No Dig Pipe Repair	4
PipePatch Repair Kits	6
PipePatch Repair Packers	8
PipePatch TYGER Lateral to Mainline Repair	10
PipePatch Equipment	12
Pipetronics® Mechanical Seal	13

CIPP LINING SOLUTIONS

Brawo® Magnavity SX	14
Lining Equipment	16
Lining Consumables	17

DRAIN CLEANING & INSPECTION SOLUTIONS

PipeTrekker	18
-------------	----

PIPE CONNECTION & REPAIR SOLUTIONS

SilverBack XL Flexible Couplings	19
Pow-R Wrap	19
Access Point	20

MANHOLE REHABILITATION

Fernco Infrastructure	22
Strong Company	24
SealGuard	25
Madewell	25

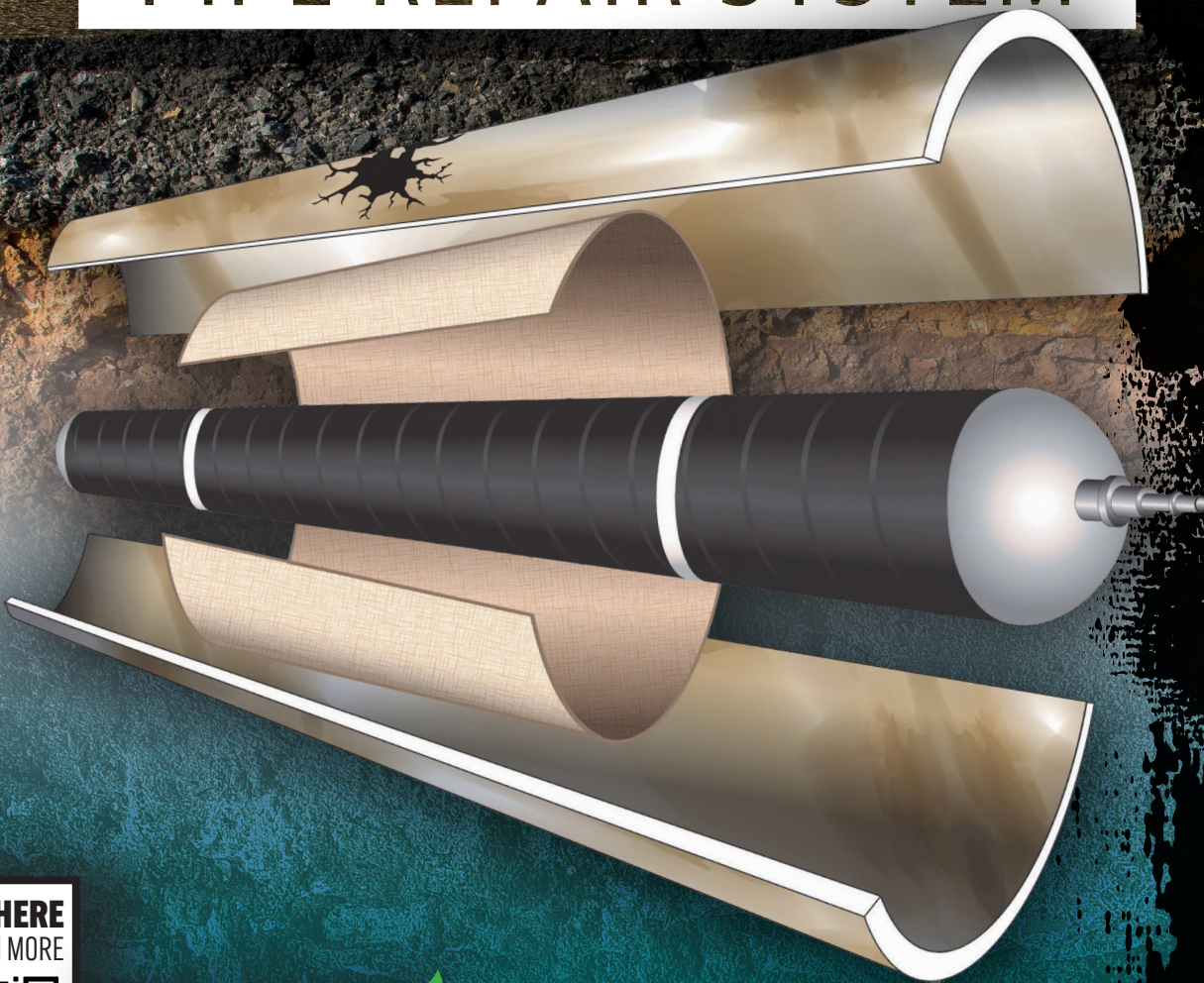
ADDITIONAL RESOURCES

Virtual Training	26
------------------	----



NO DIG

PIPE REPAIR SYSTEM



SCAN HERE
TO LEARN MORE



ECO 
FRIENDLY
CONTAINS NO VOCs

PREMIER POINT REPAIR TECHNOLOGY

LESS DISRUPTION.

MORE PRODUCTION.

PipePatch® eliminates the need for traditional excavation, reducing downtime and project delays. Its trenchless repair process leads to **faster repairs with minimal impact** on surrounding infrastructure and landscapes.

VERSATILE

PIPE SOLUTIONS

Capable of repairing pipes ranging from 1-1/2" to 72" in diameter, **PipePatch® provides a wide range of solutions** for sewer pipe repair, making it suitable for various applications.

PROVEN

PERFORMANCE

With over 750,000 patches installed worldwide, PipePatch® has established itself as a trusted solution for trenchless point repair applications.

A PERMANENT

SOLUTION

Designed for exceptional durability, PipePatch® provides a permanent solution to pipe damage. With a **best-in-class 50-year service guarantee**, it offers lasting peace of mind, ensuring repairs stand the test of time.

COST

SAVINGS

By avoiding the need for digging and **reducing labor time**, PipePatch® provides significant cost savings compared to traditional pipe repair methods.

PIPEPATCH® CERTIFICATIONS & STANDARDS COMPLIANCE



Plastic Piping System
Components and Related
Materials



IAPMO Research and Testing
assessment of the Quality
Assurance System



PipePatch complies with standards ASTM F 1216/
ASTM F 3541 "Standard Practice for Rehabilitation
of Existing Pipelines and Conduits by Inversion and
Curing of a Resin-Impregnated Tube"

PIPEPATCH Mini

SMALL DIAMETER REPAIR KITS



- **NO-DIG SOLUTION**
Rehabilitates 1½" and 2" diameter pipes without excavation.
- **CURING SPEEDS**
Available in **Summer** and **Winter** Repair Kits.
- **IDEAL APPLICATIONS**
Perfect for pools, spas, hotels, hospitals, schools, and high-rises with limited access.
- **WORKS WITH VARIOUS PIPE MATERIALS**
Compatible with plastic, cast iron, clay, steel and more.
- **SAFE AND ODORLESS**
Contains **No VOCs or Styrene**, making it non-hazardous with no transport or disposal concerns.

Part Number	Description
FPP-1.5-18	1 1/2" x 18" PipePatch Kit
FPP-2-12	2" x 12" PipePatch Kit
FPP-2-18	2" x 18" PipePatch Kit



PIPEPATCH Standard

THE INDUSTRY STANDARD POINT REPAIR SOLUTION



- **NO-DIG SOLUTION**
Rehabilitates 3" - 24" diameter pipes without excavation.
- **CURING SPEEDS**
Available in **Summer**, **Winter**, and **Rapid** Repair Kits.
- **IDEAL APPLICATIONS**
Municipal sewer systems, stormwater drainage, industrial sites, commercial properties, infrastructure, healthcare, schools, and residential laterals.
- **WORKS WITH VARIOUS PIPE MATERIALS**
Compatible with plastic, cast iron, clay, steel and more.
- **SAFE AND ODORLESS**
Contains **No VOCs or Styrene**, making it non-hazardous with no transport or disposal concerns.

Part Number	Description
FPP-3	3" x 24" PipePatch Kit
FPP-4	4" x 24" PipePatch Kit
FPP-6	6" x 24" PipePatch Kit
FPP-8	8" x 24" PipePatch Kit
FPP-10	10" x 24" PipePatch Kit
FPP-12	12" x 24" PipePatch Kit
FPP-15	15" x 24" PipePatch Kit
FPP-18	18" x 24" PipePatch Kit
FPP-24	24" x 24" PipePatch Kit

Part Number	Description
FPP-3X48	3" x 48" PipePatch Kit
FPP-4X48	4" x 48" PipePatch Kit
FPP-6X48	6" x 48" PipePatch Kit
FPP-8X48	8" x 48" PipePatch Kit
FPP-10X48	10" x 48" PipePatch Kit
FPP-12X48	12" x 48" PipePatch Kit
FPP-15X48	15" x 48" PipePatch Kit
FPP-18X48	18" x 48" PipePatch Kit
FPP-24X48	24" x 48" PipePatch Kit

PIPEPATCH Elbow

PRECISION REPAIR FOR BENDS AND TURNS



- **NO-DIG SOLUTION**
Rehabilitates 2" - 10" diameter pipes without excavation.
- **CURING SPEED**
Available in **Summer** and **Winter** Repair Kits.
- **SEAMLESS ELBOW REPAIR**
Installs easily to create a wrinkle-free liner, even in 90° bends. Ideal for repairing pipes connected to main sewer lines or hard-to-reach bends.
- **WORKS WITH VARIOUS PIPE MATERIALS**
Compatible with plastic, cast iron, clay, steel & more.
- **SAFE AND ODORLESS**
Contains **No VOCs or Styrene**, making it non-hazardous with no transport or disposal concerns.

Part Number	Description
FPP-EL2	2" x 18" Elbow PipePatch Kit
FPP-EL3	3" Elbow PipePatch Kit
FPP-EL4	4" Elbow PipePatch Kit
FPP-EL6	6" Elbow PipePatch Kit
FPP-EL8	8" Elbow PipePatch Kit
FPP-EL10	10" Elbow PipePatch Kit

Part Number	Description
FPP-EL3X48	3" x 48" Elbow PipePatch Kit
FPP-EL4X48	4" x 48" Elbow PipePatch Kit
FPP-EL6X48	6" x 48" Elbow PipePatch Kit

PIPEPATCH XTEND

LONG RUN PIPE REPAIR SOLUTION



- **NO-DIG SOLUTION**
Rehabilitates 3" - 10" diameter pipes without excavation.
- **CURING SPEEDS**
Available in **Summer** and **Winter** Repair Kits.
- **EFFORTLESS LONG-RUN REPAIRS**
Enables up to 45 feet of repair (with multiple 10- or 15-foot patches) using minimal equipment—no need for CIPP drums, wetout tables, or complex curing systems.
- **WORKS WITH VARIOUS PIPE MATERIALS**
Compatible with plastic, cast iron, clay, steel and more.
- **SAFE AND ODORLESS**
Contains **No VOCs or Styrene**, making it non-hazardous with no transport or disposal concerns.

Part Number	Description
FPP-EXT-3x120	3" x 120" Pipe XTEND Pull-in-Place kit
FPP-EXT-3x180	3" x 180" Pipe XTEND Pull-in-Place kit
FPP-EXT-4x120	4" x 120" Pipe XTEND Pull-in-Place kit
FPP-EXT-4x180	4" x 180" Pipe XTEND Pull-in-Place kit
FPP-EXT-6x120	6" x 120" Pipe XTEND Pull-in-Place kit
FPP-EXT-6x180	6" x 180" Pipe XTEND Pull-in-Place kit
FPP-EXT-8x120	8" x 120" Pipe XTEND Pull-in-Place kit
FPP-EXT-8x180	8" x 180" Pipe XTEND Pull-in-Place kit



PIPEPATCH ONE

THE ALL-IN-1 NO DIG PIPE REPAIR SYSTEM

- **NO-DIG SOLUTION**
Rehabilitates 3" - 6" diameter pipes without excavation.
- **CURING SPEEDS**
Available in **Winter** Repair Kits.
- **COMPLETE NO-DIG SOLUTION**
Ideal for those looking to start with trenchless pipe repair or working in extremely tight spaces, it offers a simple, efficient solution without excavation.
- **WORKS WITH VARIOUS PIPE MATERIALS**
Compatible with plastic, cast iron, clay, steel and more.
- **SAFE AND ODORLESS**
Contains **No VOCs or Styrene**, making it non-hazardous with no transport or disposal concerns.

Part Number	Description
FPP1-KIT3-RK	3" PipePatch ONE Replenishment Kit
FPP1-KIT4-RK	4" PipePatch ONE Replenishment Kit
FPP1-KIT6-RK	6" PipePatch ONE Replenishment Kit
FPP1-STKIT3	3" PipePatch ONE Starter Kit
FPP1-STKIT4	4" PipePatch ONE Starter Kit
FPP1-STKIT6	6" PipePatch ONE Starter Kit

PIPEPATCH Plug

LATERAL TERMINATION AND BULKHEAD

- **NO-DIG SOLUTION**
Rehabilitates 4" - 8" diameter pipes without excavation.
- **CURING SPEEDS**
Available in **Winter** Repair Kits.
- **TRENCHLESS LATERAL TERMINATION:**
PipePatch Plug offers a fast, safe, and cost-effective solution for sealing laterals and bulkheading mainlines without confined space entry.
- **WORKS WITH VARIOUS PIPE MATERIALS**
Compatible with plastic, cast iron, clay, steel and more.
- **SAFE AND ODORLESS**
Contains **No VOCs or Styrene**, making it non-hazardous with no transport or disposal concerns.

Part Number	Description
FPP-PIPEPLUG-4	4" PipePlug PipePatch Kit
FPP-PIPEPLUG-6	6" PipePlug PipePatch Kit
FPP-PIPEPLUG-8	8" PipePlug PipePatch Kit



PIPEPATCH Pillow

LARGE DIAMETER REPAIR KITS

- **NO-DIG SOLUTION**
Rehabilitates 30" - 72" diameter pipes without excavation.
- **CURING SPEEDS**
Available in **Summer** and **Winter** Repair Kits.
- **LARGE DIAMETER REHABILITATION**
PipePatch Pillow is an efficient solution for large-diameter pipe repairs. Ideal for storm and sewer rehab, including DOT drains, railway culverts, and interceptors.
- **WORKS WITH VARIOUS PIPE MATERIALS**
Compatible with plastic, cast iron, clay, steel and more.
- **SAFE AND ODORLESS**
Contains **No VOCs or Styrene**, making it non-hazardous with no transport or disposal concerns.

Part Number	Description
FPP-3036x48	30" to 36" x 48" Kit No Fold Kit
FPP-4248X48	42" to 48" x 48" Kit No Fold Kit
FPP-60X48	60" x 48" No Fold Kit
FPP-72X48	72" x 48" No Fold Kit



1.5" & 2" PACKERS

SMALL DIAMETER REPAIR

- COMPACT AND PORTABLE**

Small Diameter Packers, part of the PipePatch Mini System, repair 1-1/2" and 2" pipes in tight spaces like pools, spas, and high-rise buildings.

- PROVEN SOLUTION**

As part of the PipePatch Mini System, Small Diameter Packers offer a proven solution with a track record of over 20 years of successful installations worldwide.

Part Number

Description

FPP-PACK1.5-18	1 1/2" PipePatch Packer
FPP-PACK2	2" PipePatch Packer use 18" Patch

24" PACKERS

STANDARD DIAMETER REPAIR

Part Number

Description



- FLOW-THRU AND NON FLOW-THRU OPTIONS**

Standard Packers are available in both Flow-Thru and Non Flow-Thru versions, offering flexibility for various repair needs.

- MORE PATCHES, LESS HASSLE**

Standard Packers are true workhorses, providing over 75% more patches than other bendy packers on the market, increasing efficiency and reducing downtime.

FLOW-THRU

FPP-PACK6-10FT	6"-10"x24" with 2" Flow Through
FPP-PACK8-12FT	8"-12"x24" with 2" Flow Through
FPP-PACK1215FT-H	12"-15" with 2.6" Flow Through
FPP-PACK1824FT-H	18"-24" with 3.7" Flow Through

NON FLOW-THRU

FPP-PACK3-4	3"-4" Packer with 14" Pull Cable
FPP-PACK4-6	4"-6" Packer with 14" Pull Cable
FPP-PACK8-12	8"-12"x24" Packer with 14" cable

48" PACKERS

STANDARD DIAMETER REPAIR

Part Number

Description



- PROVEN SOLUTION**

As part of the PipePatch Standard System, Standard Packers have a track record of over 20 years of successful installations worldwide.

- VERSATILE SIZING**

The 48" Standard Packer works on pipes ranging from 3" to 24" in diameter, offering versatile repair solutions for a wide range of pipe sizes.

FLOW-THRU

FPP-PACK610FT48	6"-10"x48" with 2" Flow Through
FPP-PACK8-12X48FT	8"-12"x48" with 2" Flow Through
FPP-PACK1215FT48-H	12"-15" with 2.6" Flow Through
FPP-PACK1824FT48-H	18"-24" with 3.7" Flow Through

NON FLOW-THRU

FPP-PACK3-4X48	3"-4"x48" Packer with 14" Cable
FPP-PACK4-6X48	4"-6"x48" Packer with 14" Cable
FPP-PACK8-12X48	8"-12"x48" Packer with 14" cable

84" PACKERS

STANDARD DIAMETER REPAIR

Part Number

Description

- FLOW-THRU PACKER**

84" Standard Packers are available in only available in Flow-Thru.

- MORE PATCHES, LESS HASSLE**

Standard Packers are true workhorses, providing over 75% more patches than other bendy packers on the market, increasing efficiency and reducing downtime.

- PROVEN SOLUTION**

As part of the PipePatch Standard System, Standard Packers have a track record of over 20 years of successful installations.

- VERSATILE SIZING**

The 84" Standard Packer works on pipes ranging from 6" to 12" in diameter.

FLOW-THRU

FPP-PACK610X84-7	6"-10" x 84" (7) PipePatch Packer - Flow Thru
FPP-PACK8-12X84FT-7	8"-12" x 84" (7) PipePatch Packer - Flow Thru

LATERAL PIPE PLUG PACKERS

LATERAL TERMINATION AND BULKHEAD REPAIR

Part Number

Description

- VERSATILE SIZING**

Available for pipe diameters from 2" to 8", PipePlug provides secure termination options for a range of pipe sizes.

- TRENCHLESS TERMINATION**

PipePlug Packers are integral to the PipePatch Plug System, offering a simple, safe, and cost-effective trenchless solution for sealing off laterals and bulkheading mainlines without confined space entry, ideal before demolition or rerouting.

FPP-PACK2END	2" PipePatch Packer-End use 12" Patch
FPP-PLUGPACK3-4	PipePatch 3"-4" PipePlug Packer/End Packer
FPP-PLUGPACK4-6	PipePatch 4"-6" PipePlug Packer/End Packer
FPP-PLUGPACK8	PipePatch 8" PipePlug Packer/End Packer



10' & 15' EXTRA LONG PACKERS

LONG RUN POINT REPAIR

- NO-DIG SOLUTION**

Extra Long Packers provide a flexible, trenchless repair method, allowing installers to complete repairs efficiently through most manholes and pipes ranging from 3" to 10" in diameter.

- EFFORTLESS LONG-RUN REPAIRS**

Available in 10' or 15' lengths for pipes ranging from 3" to 10" in diameter, offering flexibility for extended repairs.

- DURABLE, HIGH-QUALITY CONSTRUCTION**

Crafted from robust materials, Extra Long Packers are designed for long-lasting performance in high-stress environments, ensuring dependable repairs in challenging conditions.

- PART OF THE PIPEPATCH XTEND SYSTEM**

These Extra Long Packers are an integral component of the PipePatch XTEND System, delivering a reliable, comprehensive solution for large-scale pipe repair and rehabilitation needs.

Part Number

Description

FPP-PACK3-4X120	PipePatch Packer 3-4"x120"
FPP-PACK3-4X180	PipePatch Packer 3-4"x180"
FPP-PACK4-6x120	PipePatch Packer 4"-6" x 120"
FPP-PACK4-6x180	PipePatch Packer 4"-6" x 180"
FPP-PACK6-10X120-NW-FT*	PipePatch Packer 6"-10" x 120"
FPP-PACK6-10X180-NW-FT*	PipePatch Packer 6"-10" x 180"

*NO WHEELS



ELBOW PACKERS

RADIAL POINT REPAIR

- SPECIALIZED FOR ELBOW REPAIRS:**

Unlike multi-purpose packers, these Elbow Packers are specifically designed to deliver consistent, high-quality repairs in pipes with bends, ensuring professional grade results every time.

- VERSATILE RANGE**

Capable of repairing pipes with diameters from 2" to 10", providing a flexible solution for various pipe sizes and applications.

- SHAPE-CONFORMING UP TO 90° BENDS**

The Elbow Packers conform smoothly to pipe bends up to 90°, allowing for wrinkle-free liner placement even in tight, curved areas.

- PART OF THE PIPEPATCH ELBOW SYSTEM**

These Elbow Packers are a key component of the PipePatch Elbow System, using 100% radius point repair technology to structurally rehabilitate inaccessible bends in pipelines.

Part Number

Description

FPP-PACK2EL	PipePatch Packer 2" Elbow
FPP-PACK3EL	PipePatch 3" Elbow Packer
FPP-PACK4EL	PipePatch 4" Elbow Packer
FPP-PACK6EL	PipePatch 6" Elbow Packer
FPP-PACK8EL	PipePatch 8" Elbow Packer
FPP-PACK10EL	PipePatch 10" Elbow Packer
FPP-PACK3X48EL	PipePatch 3" x 48" Elbow Packer
FPP-PACK4X48EL	PipePatch 4" x 48" Elbow Packer
FPP-PACK6X48EL	PipePatch 6" x 48" Elbow Packer



PILLOW PACKERS

LARGE DIAMETER PIPE REPAIR



- NO-DIG SOLUTION**

Part of the PipePatch Pillow system, Large Diameter Packers provide a flexible, trenchless repair method, allowing installers to complete repairs efficiently through most manholes and pipes ranging from 15" to 72" in diameter.

- DURABLE, HIGH-QUALITY CONSTRUCTION**

Crafted from robust materials, Large Diameter Packers are designed for long-lasting performance in high-stress environments, ensuring dependable repairs in challenging conditions.

NON FLOW-THRU

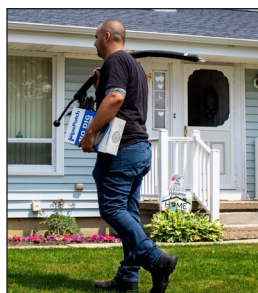
FPP-PILLOW-1524X48-H	PipePatch 15"-24" X 48" Pillow Packer
FPP-PILLOW-3036X48-H	PipePatch 30" - 36" X 48" Pillow Packer
FPP-PILLOW-4248X48_H	PipePatch 42"-48" x 48" Pillow Packer
FPP-PILLOW-6072X48-H	PipePatch 60"-72" X 48" Pillow Packer

FLOW-THRU

FPP-PILLOW-1524X48FT	PipePatch 15"-24" X 48" Flow Through Pillow Packer
----------------------	--

HD PACKERS

SPECIALTY NAVIGATION REPAIR



- EXCEPTIONAL MANEUVERABILITY**

The HD Packer is expertly designed to navigate smaller pipes with ease, providing smooth passage through tight spaces.

- NAVIGATION BALL FOR TIGHT TURNS**

Equipped with a spring-mounted "Navigation Ball" that aids in smoothly passing through 45° and 90° elbows, enhancing control and flexibility.

- VERSATILE PIPE APPLICATIONS**

Ideal for standard 3" to 6" lateral PipePatch installations, the HD Packer also accommodates transitions from 3" to 4" and 4" to 6" pipes.

Part Number

Description

FPP-PACK3-6-HD	PipePatch 3"-6"x24" HD Packer with Navigation Ball
FPP-PACK3-6X48-HD	PipePatch 3"-6"x48" HD Packer with Navigation Ball
FPP-PACK5-12-HD	PipePatch 5"-12"x24" HD Packer with Navigation Ball
FPP-PACK5-12X48-HD	PipePatch 5"-12"x48" HD Packer with Navigation Ball



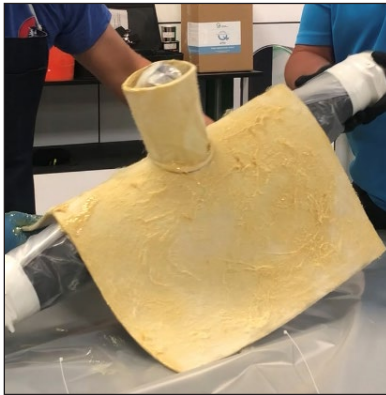


360° OR TOP HAT CIPP TEE AND WYE LATERAL SEAL SYSTEM

CONNECTING FROM THE MAIN TO THE LATERAL

PIPEPATCH TYGER TEE

LATERAL SEAL 360° MAIN TEE RESIN REPAIR KIT



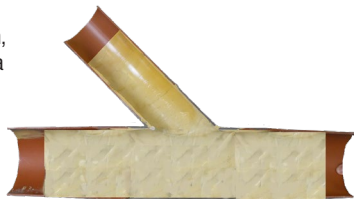
- NO-DIG LATERAL SEAL SYSTEM**
 Pipepatch TYGER installs without disrupting mainline flow or requiring access to the homeowner's property, ensuring minimal disruption and fast, effective repairs.
- VERSATILE COMPATIBILITY**
 The system mechanically bonds to all pipe types and extends 6"–10" into the lateral, providing 360° repair coverage for 4"–6" laterals and 8"–12" mainlines. It also offers top hat repairs for laterals in mainlines up to 32".
- CURING SPEEDS**
 Available in **Summer** and **Winter** Repair Kits.

Part Number	Description
FPP-8X4TEE	8" x 4" TYGERPatch Tee Kit
FPP-8X6TEE	8" x 6" TYGERPatch Tee Kit
FPP-10X4TEE	10" x 4" TYGERPatch Tee Kit
FPP-10X6TEE	10" x 6" TYGERPatch Tee Kit
FPP-12X4TEE	12" x 4" TYGERPatch Tee Kit
FPP-12X6TEE	12" x 6" TYGERPatch Tee Kit
FPP-15x4TEE	15" x 4" TYGERPatch Tee Kit
FPP-15x6TEE	15" x 6" TYGERPatch Tee Kit
FPP-18x4TEE	18" x 4" TYGERPatch Tee Kit
FPP-18x6TEE	18" x 6" TYGERPatch Tee Kit

PIPEPATCH TYGER WYE

LATERAL SEAL 360° MAIN WYE RESIN REPAIR KIT

- NO-DIG LATERAL SEAL SYSTEM**
 TYGERPatch installs without disrupting mainline flow or requiring access to the homeowner's property, ensuring minimal disruption and fast, effective repairs.
- ENVIRONMENTALLY FRIENDLY**
 PipePatch Tyger Wye Kits feature Silicate Resin, which contains no VOCs or Styrene, making it a safer option for the environment and worksite.
- RELIABLE STRENGTH & DURABILITY**
 Certified by NSF, ICC, and IAPMO, PipePatch Tyger exceeds ASTM structural standards, forming a robust seal against infiltration and exfiltration at mainline and lateral connections.
- CURING SPEEDS**
 Available in **Summer** and **Winter** Repair Kits.



Part Number	Description
FPP-8X4WYE	8" x 4" TYGERPatch Wye Kit
FPP-8X6WYE	8" x 6" TYGERPatch Wye Kit
FPP-10X4WYE	10" x 4" TYGERPatch Wye Kit
FPP-10X6WYE	10" x 6" TYGERPatch Wye Kit
FPP-12X4WYE	12" x 4" TYGERPatch Wye Kit
FPP-12X6WYE	12" x 6" TYGERPatch Wye Kit
FPP-15x4WYE	15" x 4" TYGERPatch Wye Kit
FPP-15x6WYE	15" x 6" TYGERPatch Wye Kit
FPP-18x4WYE	18" x 4" TYGERPatch Wye Kit
FPP-18x6WYE	18" x 6" TYGERPatch Wye Kit

PIPEPATCH TYGER

LATERAL REPAIR PACKERS

- PRECISION PLACEMENT TECHNOLOGY**

Designed for accurate and efficient delivery of resin and patch materials to lateral connections, ensuring a secure and reliable seal.

- DURABLE CONSTRUCTION**

Built with high-quality, corrosion-resistant materials to withstand the harsh environments of sewer and drainage systems, providing long-lasting performance.

- VERSATILE COMPATIBILITY**

Suitable for various pipe diameters and repair scenarios, making it an essential tool for both standard and complex lateral repair applications.



LIDS	Part Number	Description
	FPP-PACK-TH-4TALL	4" Rubber LID
FLOW-THRU	FPP-PACK-TH-6TALL	6" Rubber LID
	FPP-PACK-TY-8-9FTC	8"-9" Flow-through packer
	FPP-PACK-TY-10-12FTC	10"-12" Flow-through packer
	FPP-PACK-TY-12-14FTC	12"-14" Flow-through packer
	FPP-PACK-TY-16-18FTC	16"-18" Flow-through packer
	FPP-PACK-TY-20-22FTC	20"-22" Flow-through packer
	FPP-PACK-TY-24-26FTC	24"-26" Flow-through packer

360° REPAIRS IN BOTH THE LATERAL AND MAIN

PIPEPATCH TYGER

LATERAL SEAL TOP HAT MAIN WYE RESIN REPAIR KIT

- CUSTOM FIT FOR WYE CONNECTIONS**

Engineered specifically to create a durable and leak-proof seal for lateral connections joining at a Wye angle, ensuring precise application and optimal performance.

- ADVANCED RESIN TECHNOLOGY**

Features a high-strength silicate resin that bonds effectively, providing superior resistance to chemical corrosion and long-lasting protection.

- TRENCHLESS INSTALLATION**

Eliminates the need for excavation with a simple, trenchless repair method, reducing disruption and labor costs while maintaining system integrity.

Part Number	Description
FPP-4-TH-FG	4" PipePatch TYGER Top Hat Wye Kit
FPP-6-TH-FG	6" PipePatch TYGER Top Hat Wye Kit

PIPEPATCH TYGER

LATERAL SEAL TOP HAT MAIN TEE RESIN REPAIR KIT

- PRECISION FOR TEE CONFIGURATIONS**

Tailored to repair lateral connections at a 90-degree angle, ensuring a perfect fit and strong seal for main tee intersections in sewer and drainage systems.

- ENVIRONMENTALLY FRIENDLY MATERIALS**

Utilizes VOC-free resin to ensure a safe application process while providing a robust, watertight repair for long-term performance.

- STREAMLINED INSTALLATION**

Designed for easy application, enabling quick and efficient repairs without extensive downtime or specialized equipment.

Part Number	Description
FPP-4-TH-FG	4" PipePatch TYGER Top Hat Tee Kit
FPP-6-TH-FG	6" PipePatch TYGER Top Hat Tee Kit

PIPEPATCH TYGER

EQUIPMENT



SEAMLESS INSTALLATION

VERSATILE PERFORMANCE

Part Number	Description
FPP-REG-LAT	Regulator For Cagtek System (2 rq. TY system)
FPP-AIRHOSE150	150' Air Hose for Cagtek Packer (2 rq. TY system)
FPP-BKT8	Camera Bracket for Cagtek 8" Tee/Wye Packers
FPP-BKT10-12	Camera Bracket Cagtek 10"-12" Tee/Wye Packers
FPP-PUSHROD-TY	Cagtek 5' Steel Push Rod
FPP-TY-Wrench	3/8" Wrench/Packer Position

SMALL DIAMETER EQUIPMENT

SMALL DIAMETER REPAIR

- **PIPEPATCH MINI**

Specifically engineered to integrate seamlessly with the PipePatch Mini system, providing an efficient solution for repairing small diameter pipes with precision and durability.

- **PROVEN RELIABLE PERFORMANCE**

Built for consistent, dependable operation, the small diameter equipment has a proven track record of delivering high-quality results, ensuring optimal performance even in tight spaces.

Part Number

Description

FPP-REG-ASM-2

2" and below PipePatch Air Regulator (0 to 60 psi)

FPP-WIRE-MP

Green Wire Tie

FPP-PULLCABLE

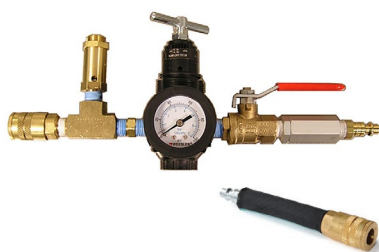
Coated Pull Cable - 250' Length

FPP-PUSHRODMINI

5' PushRod for 2" and under system

STANDARD DIAMETER EQUIPMENT

STANDARD POINT REPAIR



- **STANDARD PIPEPATCH**

Seamlessly integrates with the PipePatch Standard, Elbow, Plug and XTEND systems, providing an efficient solution for repairing pipes with precision and durability.

- **PROVEN RELIABLE PERFORMANCE**

Built for consistent, dependable operation, the standard diameter equipment has a proven track record of delivering high-quality results, ensuring optimal performance in demanding repair situations.

Part Number

Description

FPP-REG-ASM

3/8" Air Regulator (0 to 45 psi)

FPP-PUSHROD

3/8" - 5' PipePatch Push Rod

FPP-ADAPTER

3/8" PipePatch Flex Adapter

FPP-PULLCABLE

250' Coated Pull Cable

FPP-PULLCABLE500

500' Coated Pull Cable

FPP-TY18-MP

14" Zip Tie for 6"-10" Packer (100 pcs)

FPP-TY50-MP

36" Zip tie for 12"-15" Packer (50 pcs)

FPP-WIRE-MP

Green Wire Tie (100 pcs)

LARGE DIAMETER EQUIPMENT

LARGE DIAMETER REPAIR



- **PIPEPATCH PILLOW**

Specifically engineered to integrate seamlessly with the PipePatch Pillow system, providing an efficient solution for repairing large diameter pipes with precision and durability.

- **PROVEN RELIABLE PERFORMANCE**

Built for consistent, dependable operation, PipePatch equipment has a proven track record of delivering high-quality results, ensuring optimal performance in demanding repair situations.

Part Number

Description

FPP-SLV3648MP

36" Protective Sleeve for 3036x48 Pillow Packer

FPP-SLV4848MP

48" Protective Sleeve for 4248x48 Pillow Packer

FPP-REG-FAST

Fast Fill / Fast Deflate Regulator
Chicago Fittings

PROPUSH CONTINUOUS PUSH RODS

PRESSURIZED PUSH ROD

PROPUSH

- **ENHANCED MANEUVERABILITY**

Designed for easy handling, ProPush improves efficiency and simplifies work in confined spaces.

- **VERSATILE CREW COMPATIBILITY**

Suitable for both one- and two-person teams, accommodating various operational preferences.

- **COMPACT STORAGE DESIGN**

Engineered for easy storage, minimizing clutter and optimizing workspace organization.

- **FLEXIBLE LENGTH OPTIONS**

Available in lengths from 25 to 150 feet, with custom lengths upon request, catering to diverse project requirements.

Part Number

Description

FPP-PUSHROD-10025

25 foot 3/4" dia. continuous pushrod with 3/8" fittings for 3"-10" diameter installations

FPP-PUSHROD-10050

50 foot 3/4" dia. continuous pushrod with 3/8" fittings for 3"-10" diameter installations

FPP-PUSHROD-10100

100 foot 3/4" dia. continuous pushrod with 3/8" fittings for 3"-10" diameter installations

FPP-PUSHROD-21075

75 foot 1" dia. Continuous pushrod with 3/8" fittings for 10"-15" diameter installations

FPP-PUSHROD-21150

150 foot 1" dia. continuous pushrod with 3/8" fittings for 10"-15" diameter installations





Powered by:

pipetronics
Intelligent Pipe Robots

FLEX MECHANICAL SEAL PACKERS

**SPECIAL ORDER ONLY*

PIPETRONICS® PIPE SEALS

Part Number

Description

- **CORRECTS MISALIGNMENT & OFFSETS**

Pipe-Seal Flex addresses sleeve misalignment and axial bending, restoring pipe alignment and functionality.

- **STRONG, SECURE SEAL**

The stainless-steel sleeve and EPDM sealing element form a tight, leak-proof connection with the pipe wall.

- **VERSATILE SIZING**

Compatible with pipes from 6" to 24" in diameter, offering a flexible solution for various repair needs.

FPP-PACK6-8MS

6"-8" Mechanical Seal Packer

FPP-PACK8-12MS

8"-12" Mechanical Seal Packer

FPP-PACK14-20MS

14"-20" Mechanical Seal Packer

FPP-PACK21-24MS

21"-24" Mechanical Seal Packer



FIXED MECHANICAL SEAL SLEEVES

**SPECIAL ORDER ONLY*

PIPETRONICS® PIPE SEALS

Part Number

Description

- **EFFECTIVE FOR SINGLE OR SERIES INSTALLATIONS**

Pipe-Seal Fix is ideal for single installations or overlapping to address larger defects and longitudinal cracking.

- **RELIABLE FOR LINE OFFSETS**

Perfect for fixing pipe defects, including line offsets, with a secure and lasting seal.

- **FLEXIBLE SIZING**

Available for pipes from 6" to 24" in diameter, offering versatile repair solutions.

FPP-SEAL6

6" Sleeve

FPP-SEAL8

8" Sleeve

FPP-SEAL10

10" Sleeve

FPP-SEAL12

12" Sleeve

FPP-SEAL15

15" Sleeve

FPP-SEAL18

18" Sleeve

FPP-SEAL21

21" Sleeve

FPP-SEAL24

24" Sleeve



END MECHANICAL SEAL SLEEVES

**SPECIAL ORDER ONLY*

PIPETRONICS® PIPE SEALS

Part Number

Description

- **PERMANENT SEAL IN PRESSING GROUNDWATER**

Pipe-Seal End creates a durable seal between the liner and the pipe, even under groundwater pressure.

- **PROTECTS LINER EDGES**

Safeguards liner cutting edges from damage while ensuring a secure connection.

- **VERSATILE APPLICATION**

Suitable for any liner thickness, available for pipes from 6" to 24" in diameter.

FPP-END6

6" End Seal Sleeve

FPP-END8

8" End Seal Sleeve

FPP-END10

10" End Seal Sleeve

FPP-END12

12" End Seal Sleeve

FPP-END15

15" End Seal Sleeve

FPP-END18

18" End Seal Sleeve

FPP-END20

20" End Seal Sleeve

FPP-END24

24" End Seal Sleeve



NEW

BRAWO® Magnavity SX

smart • efficient • strong



SCAN HERE
TO LEARN MORE!



INTELLIGENT LED HEADS

With integrated magnetic coupling for remote unlocking, these heads ensure precise placement, **reducing errors, saving time, and minimizing costly rework.**

FULLY SOFTWARE-CONTROLLED TECHNOLOGY

The system's advanced software ensures **precise automation of the curing process**, optimizing performance, reducing manual adjustments, and delivering **unmatched consistency** for every job.

REVERSIBLE DUAL CAMERA SYSTEM

Provides **enhanced monitoring** and accuracy throughout the operation.

Mega LED Head ►

Larger diameter for maximum light coverage (6"-12")

Nano LED Head ►

Compact for smaller applications (4"-8")



NEW

BRAWO® Magnavity SX

smart • efficient • strong

INNOVATIVE CURING DESIGN

LED heads enable **curing during liner inversion**, eliminating the need for additional reel insertion.

BRAWO® MAGNAVITY SX

LED LINING SYSTEM



- INTELLIGENT LED HEADS**
 With integrated magnetic coupling for remote unlocking, these heads ensure precise placement, **reducing errors, saving time, and minimizing costly rework.**
- REVERSIBLE DUAL CAMERA SYSTEM**
 Provides enhanced monitoring and accuracy throughout the operation.
- MOBILE INTEGRATION**
 Features an **installation log and interface to mobile devices** via USB or Wi-Fi for easy data access.
- PLUG & PLAY CAPABILITY**
 The system automatically detects the inserted LED head, ensuring seamless setup and operation.

Part Number	Description
BS-40898990	BRAWO Magnavity SX LED UV Light Curing Unit
BS-40898993	BRAWO LED Head Nano SX 96 - for Diameters 3"-8" (DN70 - DN225)
BS-40898992	BRAWO LED Head Mega SX 192 - for Diameters 8"-12" (DN150 - DN300)
BS-40898960	BRAWO Inspection Glass LED Head Mega SX 192
BS-40898936	BRAWO Sluice (BM-C-6-4) with Camlock Fitting
BS-40898970	BRAWO Rubber Seal Set (25 x 3.5mm)
BS-40898977	BRAWO Aramid Braided Line 164' (50m)
BS-40895489	BRAWO Magnetic Up/Holding Cap Nano SX 96 (40mm)
BS-40895610	BRAWO Magnetic Up/Holding Cap Mega SX 192 (52mm)
BS-40898991	BRAWO Hose Package SX (BM002-S-60-25)

RENSSI INVERSION DRUM

RID-600-S3-B INVERSION DRUM WITH SIDE PORT



- ENGINEERED FOR DURABILITY**
 Built from high-grade materials to withstand demanding job site conditions.
- VERSATILE PERFORMANCE**
 Compatible with a wide range of pipe diameters and liner lengths, ensuring adaptability for various installation requirements.
- EFFORTLESS OPERATION**
 Thoughtfully engineered with a user-friendly design, this equipment prioritizes maximum convenience, making operation intuitive, efficient, and hassle-free for professionals in the field.

Part Number	Description
RID-600-S3-B	Renssi 24" (600mm) Inversion Drum
DH-6S-CL-100	Renssi Drum Head with 6" Thread Attachment for 4" (100mm) Liner
DH-6S-CL-150	Renssi Drum Head with 6" Thread Attachment for 6" (150mm) Liner

RENSSI®
DRAIN CLEANING EQUIPMENT



CIPP LINING SOLUTIONS



Brawoliner®

PREMIUM LINERS & RESINS FOR FLAWLESS REPAIRS

Delivering high-performance liners and resins for seamless pipe rehabilitation. BRAWOLINER® navigates bends with ease, while advanced resins cure fast with heat or light—ensuring durable, efficient repairs.

BRAWO® LINING CONSUMABLES

PREMIUM MATERIALS FOR RELIABLE CIPP INSTALLATIONS

Part Number	Description
BS-40980048	BRAWOLINER 4" (DN100) 328' (100m) Roll
BS-40980066	BRAWOLINER 6" (DN150) 328' (100m) Roll
BS-40986012	BRAWOLINER 3D 3"-4" (DN70-DN100) 328' (100m) Roll
BS-40987048	BRAWOLINER 3D 4"-6" (DN100-DN150) 328' (100m) Roll
BS-46453004	BRAWO Airbagliner 4" (DN100) 328' (100m) Cal-Tube Roll
BS-46453006	BRAWO Airbagliner 6" (DN150) 328' (100m) Cal-Tube Roll
BS-47000820	BRAWO I / III / SRR Resin - Component A (6 gallons)
BS-47000825	BRAWO III Resin - Component B (2 gallons)
BS-47000831	BRAWO UVPox Resin (3 gallons)



- SUPERIOR DURABILITY**
 Outstanding material properties ensure long-lasting, high-quality pipe rehabilitation.
- SEAMLESS FLEXIBILITY**
 BRAWOLINER® adapts to bends and dimension changes for a precise fit.
- FAST & VERSATILE CURING**
 Advanced resin systems adapt to various curing methods for efficient installation.



BRAWO® Magnavity SX is honored as the **most innovative product** by the North American Society for Trenchless Technology (NASTT).



BUY
NOW



INSPECTION TECHNOLOGY

PIPE TREKKER

THE FIRST **BATTERY-POWERED**

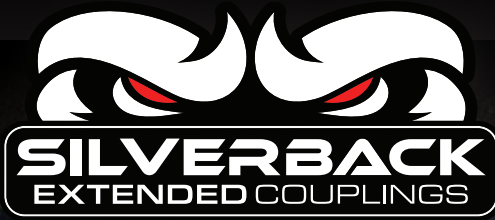
PORTABLE CRAWLER FOR

HARD-TO-REACH MANHOLES

PIPETREKKER

Part Number	Description
PT-A-200-BASE	Crawler Body, 8" wheels, Lifting Kit, Charger, Batteries and Carry Case
PT-A-200S	Base system, PTZ 1080p IP Camera, Elevating Arms, 7" LCD Hand Control
PT-A-200X	Base system, PTZ 1080p IP Camera, Elevating Arms, 10" Touch Screen

Backed by over a decade in underwater robotics, Pipe Trekker's tough aluminum and steel crawlers are **built to last**. Easy-to-use controls mean anyone can get up and running fast. With **unmatched portability**, they're perfect for pipe cleaning, lining, and inspection—**no TV truck needed!**



XL COUPLINGS

Ideal for Pipe Bursting & Ramming

Part Number	Description	A	B	C
SBXL144	4" Clay to 4" Plastic	5.4	4.5	10
SBXL244	4" Plastic to 4" Plastic	4.5	4.5	10
SBXL166	6" Clay to 6" Plastic	7.5	6.63	10
SBXL266	6" Plastic to 6" Plastic	6.63	6.63	10
SBXL188	8" Clay to 8" Plastic	10	6.63	10
SBXL288	8" Plastic to 8" Plastic	8.63	8.63	10
SBXL21010	10" Plastic to 10" Plastic	10.75	10.75	10
SBXL21212	12" Plastic to 12" Plastic	12.75	12.75	10

This product can be custom ordered to fit most common sewer pipe sizes. **Call today to learn more!**



POW-R WRAP	
Part Number	Description
FPW248CS	2" x 48" wrap, repairs up to 1" pipe
FPW3132CS	3" x 132" wrap, repairs 1 1/4" to 3" pipe
FPW4252CS	4" x 252" wrap, repairs 3" to 6" pipe

POW-R PATCH - EPOXY PATCH	
Part Number	Description
FP-P46	4" x 6" patch

POW-R WRAP INDUSTRIAL					
Part Number	Description				
FPW8540S-1	8" x 540" wrap, repairs up to 50" pipe				
PIPE OUTSIDE DIAMETER	8" - 18"	20" - 24"	26" - 34"	36" - 42"	44" - 50"
Number of Kits REQUIRED for Pipe Size	1 KIT	2 KITS	3 KITS	4 KITS	5 KITS



NO CLEAN-OUT?
NO PROBLEM!



AccessPoint

LEARN
MORE



Watertight Pipe Access and Plug Solution

The **Fernco Access Point** offers a watertight, secure entry into **3"-6" plastic and cast iron pipes for drain cleaning, inspections, and maintenance.** It installs quickly, avoiding costly excavation while preventing leaks and groundwater infiltration.



Part Number	Description
XP-1KIT1	Installation Kit - Access Point Plug (x1), 2-1/8" Hole Saw (x1), 6mm Allen Wrench (x1)
XP-1-6PACK	6-Pack Set - Access Point Plugs (x6)
XP-1KIT2	Pro Installation Kit - Access Point Plugs (x12), 2-1/8" Hole Saw (x1), 6mm Allen Wrench (x1)



INFRASTRUCTURE

TRENCHLESS SOLUTIONS

Advancing Pipe & Infrastructure Rehabilitation



X-SEAL

Single-component hydrophobic polyurethane sealant that effectively bonds and seals concrete, metal, plastic, wood, and pre-cast connections, preventing infiltration.

MAINSTAY DS-5

100% solids epoxy coating with a multi-component curing system that enhances toughness, permanent flexibility, and chemical and temperature resistance.

SEALGUARD II

Polyurethane grout, quickly and permanently stops high inflow leaks in precast, cement, or brick underground structures by sealing active infiltration in even the smallest fractures.

QSR

Rapid-setting, high early strength, acid-resistant calcium aluminate product for rehabilitating benches, inverts, and voids. Sets in 10-15 minutes for quick structural restoration.

MADEWELL® ML-10

High-strength, low-shrinkage, low-permeability mortar designed for rehabilitating deteriorated concrete structures. It restores structural integrity, seals rough surfaces, and resists external hydrostatic water pressure.

MADEWELL® 711

100% solids urethane sealant for sealing manhole chimneys and expansion joints. It provides a flexible, durable, water-resistant bond on dry concrete surfaces.

HYPERFLEX

Hydrophobic polyurethane grout for sealing leaks in concrete. It forms a permanent, non-shrinking seal and is NSF-ANSI-CAN 61 approved for potable water.

STRONG PLUG

Rapid-setting (60 seconds), hand-applied cementitious product for stopping infiltrating water.

MS-2®A | MS-2®C

MS-2A is cost-effective for infiltration and structural restoration, while **MS-2C** offers high early strength and corrosion resistance in mild sulfide environments.

HIGH PERFORMANCE

100% calcium aluminate mortar for rehabilitating structures in corrosive environments. It stops infiltration, restores integrity, and forms a durable liner for substrates with a pH of 1.0 or higher.

STRONG COMPANY

CEMENTITIOUS REPAIR PRODUCTS

• COMPREHENSIVE REHABILITATION

Strong-Seal® Systems are engineered to restore concrete and masonry structures, addressing inflow, infiltration, and corrosion.

• MANHOLE SOLUTIONS

Specialized cementitious products and patented equipment designed for effective manhole rehabilitation.

• STORMWATER REPAIR

Storm Seal® restores pipes, culverts, and basins using cost-effective centrifugal casting or spraying methods.



Part Number	Description
STRS-SGROUT250	Strong-Seal Grout 250 Cementitious Grout Void and Leak Stabilization 60 lb. Bag
STRS-SGROUT12000	Strong-Seal Grout 1000 High-Strength Cementitious Grout 60 lb. Bag
STRS-SGROUT1000	Strong-Seal Grout 12000 Self-Consolidating Grout 65 lb. Bag
STRS-SEAL	Strong-Seal® Storm Seal® Spray-Applied Lining 60 lb. Bag
STRS-QSR-PAIL	Strong-Seal® QSR Fast-Acting Repair Mortar 40 lb. Bucket
STRS-QSR-BAG	Strong-Seal® QSR Fast-Acting Repair Mortar 50 lb. Bag
STRS-PP	Strong-Seal Profile Plus Cementitious Liner 60 lb. Bag
STRS-PLUG	Storm-Seal® Strong-Plug® Rapid-Acting Leak-Stop Cement 50 lb. Bucket
STRS-MS-2C	Strong-Seal MS-2®C Bag High-Strength Mortar 60 lb. Bag
STRS-MS-2A	Strong-Seal MS-2®A Economical Cementitious Mortar 60 lb. Bag
STRS-HPM	Strong-Seal High Performance Mix 60 lb. Bag
STRS-GEOPOLYMER	Strong-Seal Geopolymer for Structural Rehabilitation 65 lb. Bag



SEALGUARD

HYDROPHOBIC POLYURETHANE GROUT REPAIR PRODUCTS



- RAPID REACTION TIME**

SealGuard II is a dual-component hydrophobic polyurethane that reacts within 1 to 3 seconds, effectively stopping high-flow leaks exceeding 50 gallons per minute.

- DURABLE AND NON-SHRINKING**

Being hydrophobic, SealGuard grouts do not absorb water or shrink after curing, ensuring long-lasting seals in various structures, including manholes, vaults, and tunnels.

- VERSATILE APPLICATION**

Suitable for both high-flow and low-flow leaks, SealGuard products can be injected into fine fractures and perform well even in the presence of flowing water, making them ideal for diverse infrastructure repairs.

Part Number	Description
SG-6KITST	SealGuard II Starter Kit (6pk) with Dual Component Caulk Gun
SG-CGUND	Premium Dual Component Caulk Gun
SG-CGUNPN	Pneumatic Dual Component Caulk Gun
SG-MXP6	SealGuard II Static Mixers (6 pk)
SG-MXP12	SealGuard II Static Mixers (12 pk)
SG-RE6	SealGuard II Reorder Kit (6 pk) with mixing tips
SG-RE12	SealGuard II Reorder Kit (12 pk) with mixing tips
SG-HF6	HyperFlex (300 mil cart.) 6 pack
SG-HF12	HyperFlex (300 mil cart.) 12 pack
SG-HF12TIP	HyperFlex Tips (12 pk)
SG-HF5G	HyperFlex (5 gallon container)
SG-X-SEAL-12	X-Seal (12-300 ml Kit)

MADEWELL

EPOXY COATING REPAIR PRODUCTS



- COMPREHENSIVE RESTORATION SYSTEMS**

The Mainstay® Composite Liner combines high-strength restoration mortars, such as Mainstay® ML-72, with epoxy corrosion barrier coatings like Mainstay® DS-5. This system repairs and protects structures such as manholes, lift stations, and wet wells.

- HIGH-BUILD EPOXY COATINGS**

Mainstay® DS-5 is a 100% solids epoxy coating applied up to 125 mils thick, providing robust protection against corrosion and chemical attack in wastewater environments.

- SPECIALIZED APPLICATION EQUIPMENT**

Madewell manufactures equipment designed for efficient application of their mortars and coatings, ensuring proper installation and optimal performance of their products.

Part Number	Description
MW-ML72	Mainstay® ML-72 Madewell® Sprayable Microsilica Restoration Mortar
MW-ML72HP	Mainstay® ML-72HP Madewell® Horizontal Pipe Restoration Mortar
MW-MLCA	Madewell® Mainstay® ML-CA Pure Calcium Aluminate Cement Mortar
MW-MLPF	Madewell® Mainstay® ML-PF Pure Calcium Aluminate Cement Mortar With 100% Pure Fused Calcium Aluminate Aggregates
MW-ML10	Madewell® Mainstay® ML-10 Hydraulic Cement Mortar
MW-GEOSPIN	Madewell® Mainstay® GeoSpin Geopolymer Repair Mortar
MW-1103	Madewell® 1103 Epoxy Coal Tar Coating
MW-DS-5	Madewell® Mainstay® DS-5 100% Solids Epoxy Coating
MW-DS-5-HB	Madewell® Mainstay® DS-5-HB 100% Solids Medium Build Epoxy Coating
MW-DS-5-FS	Madewell® Mainstay® DS-5 FS Ultra Fast Set High Build Epoxy Coating
MW-714	Madewell® Mainstay® 714 Flake Glass Epoxy Novolac Vinyl Ester Coating
MW-806	Madewell® 806 Trowelable Flexible Joint & Manhole Chimney Seal
MW-711	Madewell® 711 Sprayable Flexible Joint & Manhole Chimney Seal
MW-927	Madewell® 927 Penetrating Epoxy Primer/Sealer



TOP NOTCH TRAINING

FIT FOR THE PROS

SCAN HERE
TO LEARN MORE



A worker wearing a blue hard hat, orange safety vest, and blue pants is kneeling in a trench. They are using a long, thin rod to install a large, dark, circular patch into a hole in the ground. The trench is lined with a woven geotextile material. The background shows green foliage.

PATCH LIKE YOU MEAN IT

The logo consists of a blue circle with a white outline, containing a stylized white wave or patch shape.

ipePatch®
NO DIG Pipe Repair System



UNITED STATES

300 S. Dayton Street
Davison, Michigan 48423
(877) 450-3701



CANADA

850 Phillips St. E.
Sarnia, Ontario N7T 1Z6
(519) 332-6711



BRAZIL

Rua Luigi Galvani, 42 - Sala 83 CEP
04575-020 - Sao Paulo - SP Brasil
+55 11 2737-1357



877-450-3701



S1EONLINE.COM



SERVICE@S1EONLINE.COM